



AMERICAN  
PATIO CONCEPTS  
★ ★ ★

American  
**Patio  
Covers**  
*Plus*

Acrylic  
**Patio  
Covers**  
**DIRECT**



## ACRYLIC PATIO COVER KIT INSTALLATION

Acrylic Patio Cover kits are easy to install! Our installation guide and video are easy-to-follow, but help from our support team is always just a phone call away. Read the guide, gather up your tools, layout your components and roll up your sleeves! In as little as one day, you will have installed a top quality Acrylic Patio Cover that withstand the test of time.

### All Acrylic Patio Cover Kits come complete with the following –

- Aluminum posts, I-beams, rafters and accessories
- Aluminum hanging rail and flashing
- Aluminum gutters with downpipe and accessories
- Aluminum side fascia
- Acrylic (double-skin sheets)
- Standard fasteners Note: For some installations, additional special hardware or fasteners may be required.

### Required Tools and Hardware

In addition to the components and materials included with your Acrylic Patio Cover kit, you will require the following tools and hardware:

- tape measure
- square
- level
- felt tip marker or grease pencil
- no. 2 Robertson screwdriver (red handle) and/or Phillips screwdriver
- electric drill with 3/16" diameter drill bit
- rubber mallet
- utility knife
- pliers
- plumb line
- chalk line
- step or extension ladders (suitable to reach beyond your highest intended installation height)
- soft, non-abrasive cleaning rags

The following items may be required (dependent upon the on-site alterations you may be making to the supplied kit):

- circular saw with blades suitable for cutting aluminum and plastic products
- hacksaw and/or miter saw
- tin snips
- silicone sealant (recommend Tremco Specturm II, G.E. Silpruf or Dow 795)
- metal roof flashing (no less than 0.029 gauge)
- safety goggles

## CONTACT US

5916 195th St., NE  
Arlington, WA 98223  
[www.americanpatiocovers.com](http://www.americanpatiocovers.com)  
Email: [tom@americanpatiocovers.com](mailto:tom@americanpatiocovers.com)  
Phone: 360-530-2508

copyright © 2020 American Patio Cover  
Rev 23  
May 2020





# ACRYLITE® Patio Systems

Protect your deck or favorite outdoor environment, cover a spa or pool while still enjoying natural light. Block the harmful UV rays without blocking the light from nearby doors and windows. Don't let rain spoil that outdoor gathering and create some extra living space for your home.

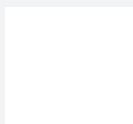
Produced from the most weatherable polymer on the market, ACRYLITE® acrylic sheet outperforms other covering products like fiberglass, polycarbonate and PVC product.

Fully engineered, structural aluminum framework is easily adaptable to suit virtually any application and each cover is manufactured to each unique project. Combine from several Acrylite & Metal color to complete a lasting cover uniquely designed to suit your personal style and taste.

Talk to us about today how we can help make your dream became a reality.

Acrylic Color Choice: Heatstop Cool blue, Solar Cool white, Light white, Clear, Bronze

Aluminum  
Framework  
Color Choices:



WHITE



BEIGE



BROWN



BLACK





### **\*Reduce Heat Buildup**

Solar tints and Heatstop option Create a comfortable environment.

### **\*Attractive High-Gloss Sheen**

Light diffusing surface emits soft uniform light even on overcast days.

### **\*Affordable & Safe**

Shield your family from harmful UV rays.  
Less expensive than glass and made from

### **\*Custom Designs**

Adapts to single or multi-story homes as well as structural and non-structural systems.

### **\*Long Lasting & Maintenance Free**

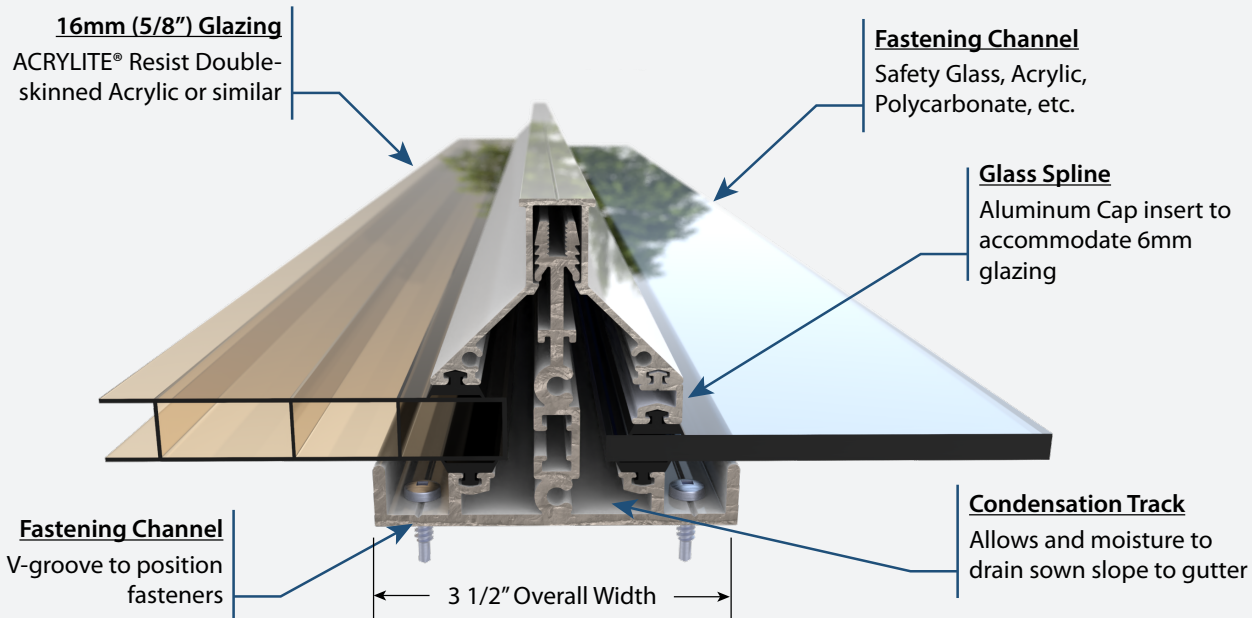
No replacement costs due to yellowing.  
Backed by a 30 year non-yellowing warranty.



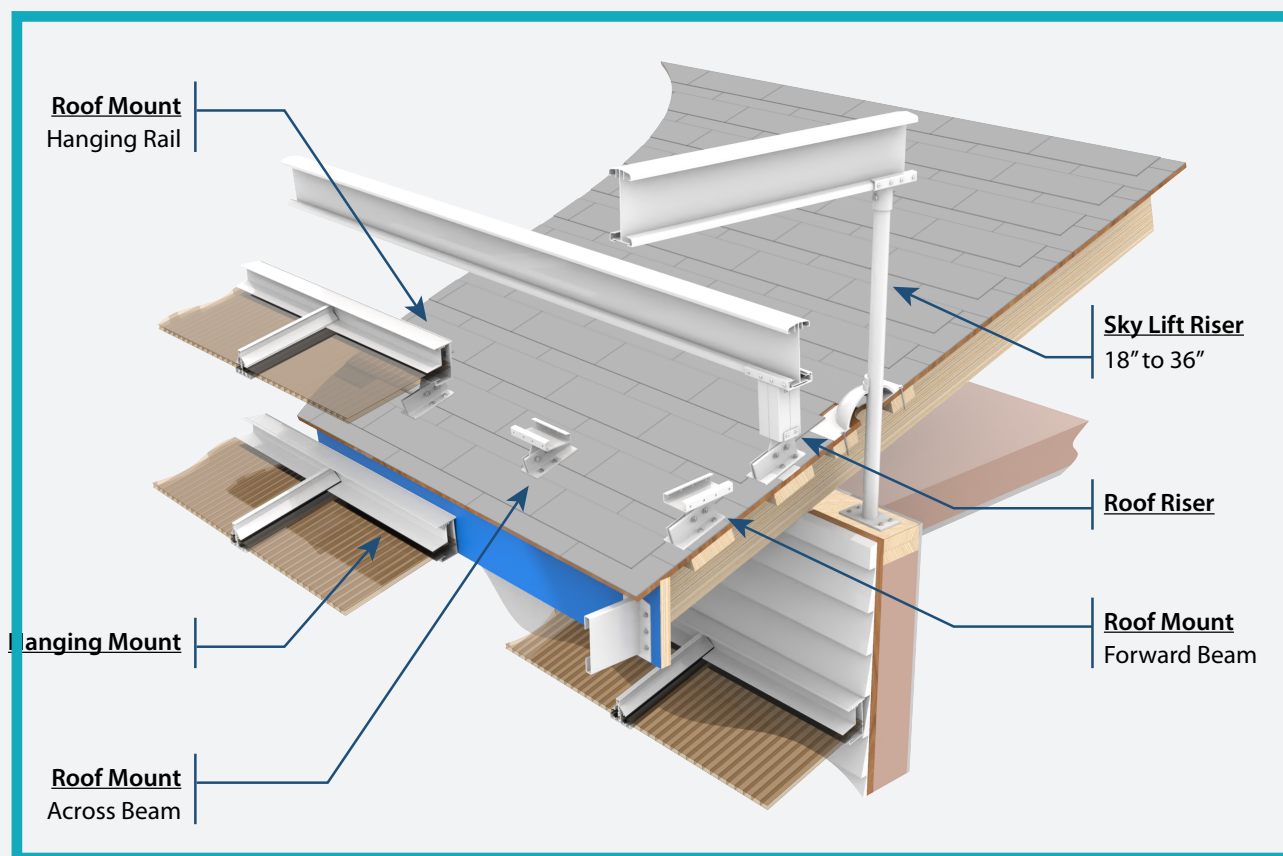




## T-Bar Rafter Details / Options



## Roof Mount Details / Options



# Refine the Outdoors



## TABLE OF CONTENTS

<b>ACRYLITE PANELS</b>	<b>----- 12</b>
101718	ACRYLITE® . . . . . 14
101740	TERMINAL SECTION . . . . . 15
102237	F-SECTION . . . . . 16
<b>RAFTER SYSTEMS</b>	<b>----- 18</b>



100433	T-BAR RAFTER ASSEMBLY (ACRYLIC) . . . . .	20
100801	T-BAR RAFTER FASCIA ASSEMBLY (ACRYLIC) . . . . .	21
100802	T-BAR RAFTER ASSEMBLY (GLASS) . . . . .	22
100803	T-BAR RAFTER FASCIA ASSEMBLY (GLASS) . . . . .	23

## BEAM SUPPORTS -----24

100340	LIGHT DUTY BEAM . . . . .	26
100365	HEAVY DUTY BEAM . . . . .	27
100394	TWIN WALL BEAM . . . . .	28
100427	BOX BEAM . . . . .	29
100855	HEAVY DUTY BEAM 22.5 DEGREE END CAP . . . . .	32
100895	TWIN WALL BEAM 90 DEGREE END CAP . . . . .	33
100919	TWIN WALL BEAM 22.5 DEGREE END CAP . . . . .	34
100405	HEAVY DUTY BEAM SPLICE - 16" . . . . .	35
100537	LIGHT DUTY BEAM SPLICE . . . . .	36
100531	TWIN WALL BEAM SPLICE . . . . .	37
100573	TWIN WALL MOUNTING BRACKET . . . . .	38
100577	RIDGE FLASHING - 3 3/4" X 3 1/4" X 102" . . . . .	39

## POST COMPONENTS -----40

100425	PATIO COVER POST . . . . .	42
100429	POST TOP SHOE (EXTRUDED) - 3" . . . . .	43
100523	INTERNAL TOP/BOTTOM POST SHOE . . . . .	44
103495	UNIVERSAL BEAM POST BRACKET . . . . .	45
100533	POST BASE SHOE . . . . .	46
100282	3" POST BASE (CAST) . . . . .	47
100280	POST BASE SHOE COVER . . . . .	48

## GUTTER SYSTEMS -----50

100385	LOW PROFILE GUTTER WITH END CAPS . . . . .	52
101142	COLONIAL GUTTER WITH END CAPS . . . . .	53

102057	2 x 3 GUTTER DOWNPIPE -10' . . . . .	54
102060	2 x 3 GUTTER DOWNPIPE ELBOW . . . . .	55
102061	2 x 3 GUTTER DOWNPIPE OUTLET . . . . .	56
102062	2 x 3 GUTTER DOWNPIPE STRAP . . . . .	57
100407	LOW PROFILE GUTTER SPLICE -16" . . . . .	58
101141	COLONIAL GUTTER SPLICE - 16" . . . . .	59

## ROOF MOUNTING SYSTEMS ----- 60

101335	ROOF RISER PACKAGE - HANGER . . . . .	63
101714	ROOF MOUNT PACKAGE - HANGER . . . . .	64
101728	ROOF RISER PACKAGE - BEAM . . . . .	65
101729	ROOF MOUNT PACKAGE - BEAM (FORWARD) . . . . .	66
101734	ROOF MOUNT PACKAGE - BEAM (ACROSS) . . . . .	67
101798	SKYLIFT RISER TUBE ASSEMBLY . . . . .	68
101800	SKYLIFT SADDLE BEAM . . . . .	69
101804	SKYLIFT SADDLE HANGING RAIL . . . . .	70
100419	Wall Mount Bracket . . . . .	71
100400	HANGING RAIL WITH END CAPS . . . . .	72
100411	HANGING RAIL SPLICE -16" . . . . .	73

## RETROFIT ----- 74

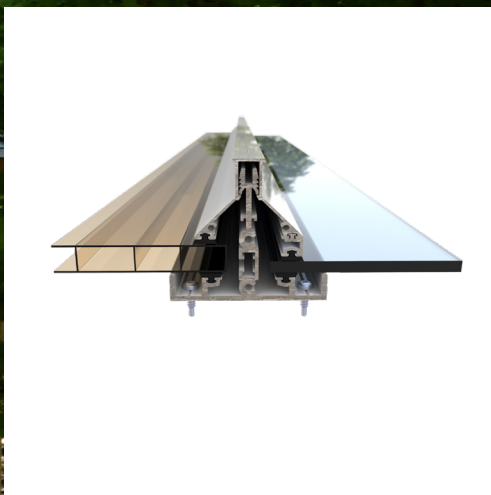
100442	LARGE F-SECTION . . . . .	76
100579	Wall Flashing - 2 3/4" x 1 1/4" x 102" . . . . .	77
103338	CLAMPING BAR UPPER ASSEMBLY . . . . .	78
101741	CLAMPING SYSTEM COMPLETE ASSEMBLY . . . . .	79
100604	WEATHER BLOCK WITH GASKET . . . . .	80
100415	1 x 1 CORNER . . . . .	81
100464	BEAM CORNER GUSSET . . . . .	82
103363	Glass Rail with Vinyl Insert . . . . .	83
100581	Gutter Flashing - 3 1/2" x 3/4" x 7/8" x 102" . . . . .	84
101743	ACRYLITE® Wave . . . . .	85
101761	Wave Profile Calottes . . . . .	86





# ACRYLITE PANELS

Produced from the most weatherable polymer on the market, ACRYLITE® acrylic sheet outperforms other covering products like fiberglass, polycarbonate and PVC products.

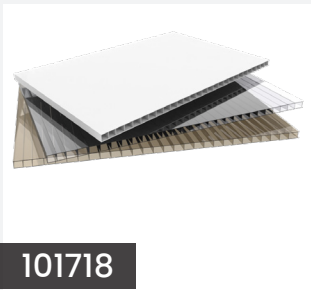


## COVER YOUR SPACE

**Make the sun your ally, not your enemy.**

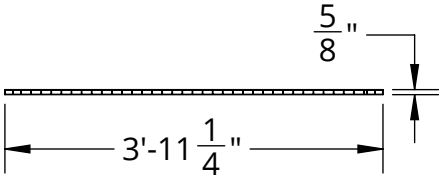
American Patio Concepts has perfected the way we see and feel the sun. Our covers feature a wide range of ACRYLITE® acrylic panels. Customize the amount of light, heat and privacy of your outside space for a personalized outdoor-living experience.







Front View



ACRYLITE®

Category: ACRYLITE

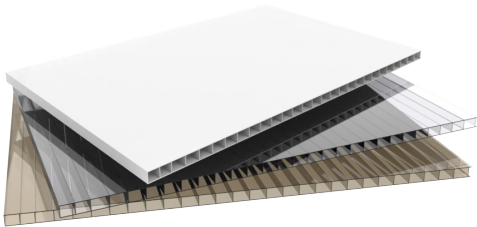
Part No. 101718

Specifications:

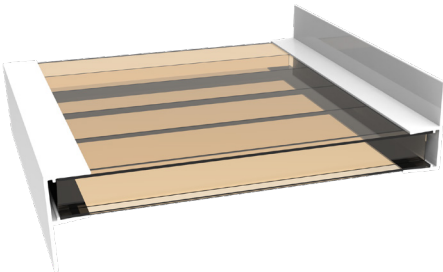
[CAD Download](#) | [PDF Download](#)

**\$9.83/sqft.**

Iso View

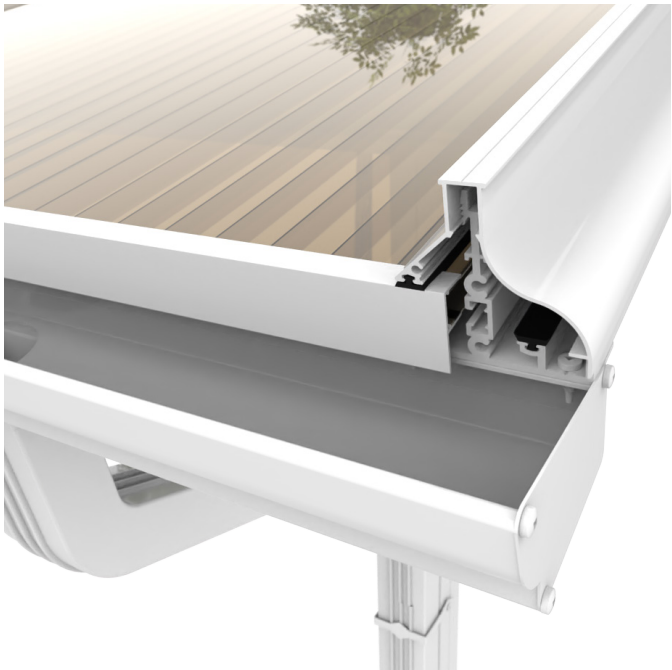


Detail View



INCLUDED PARTS			
#	PART NO.	PART NAME	QTY
1	101718	ACRYLITE® Clear	1
2	101719	ACRYLITE® Bronze	1
3	101722	ACRYLITE® Light White	1
4	101720	ACRYLITE® Solar Cool White	1
5	101721	ACRYLITE® Heatstop Cool Blue	1

Application Typical Installation



101740      TERMINAL SECTION

TERMINAL SECTION

Category: FLASHING

Part No. 101740

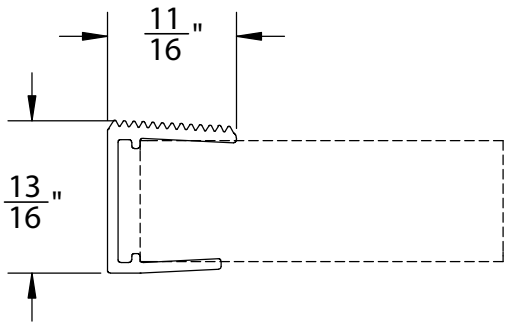
Specifications:

- Aluminum Section Used To Seal Open Ends Of 16 mm Double-Skin Acrylic Panels. Used In Extreme Pitches Or Where Alternative To F-Section Is Merited. Serrated Side To Restrict Water Flow Upwards On High End And Downward On Low End.

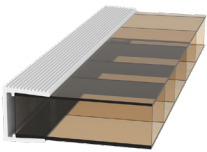
[CAD Download](#) | [PDF Download](#)

**\$1.27/ft.**

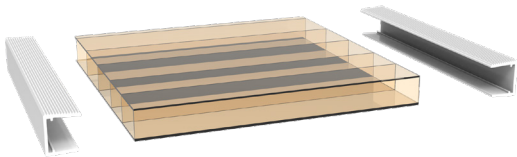
Front View



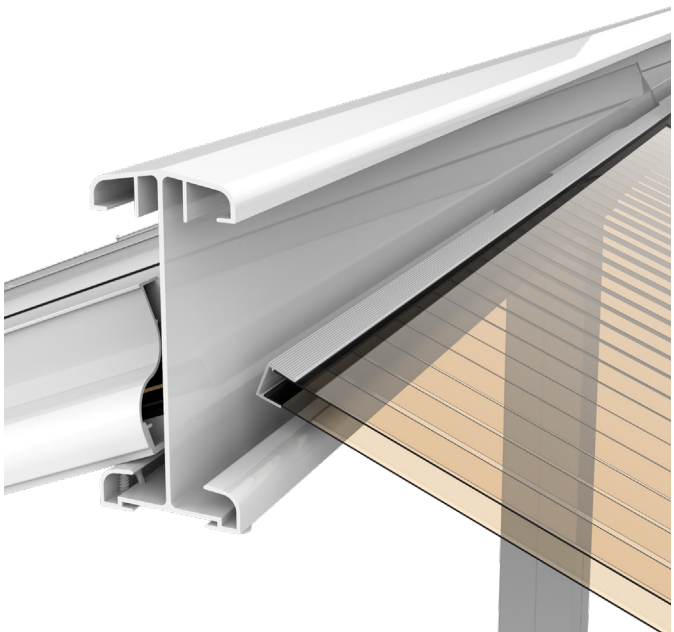
Iso View



Detail View



Application Typical Installation



**102237****F-SECTION****F-SECTION**

Category: FLASHING

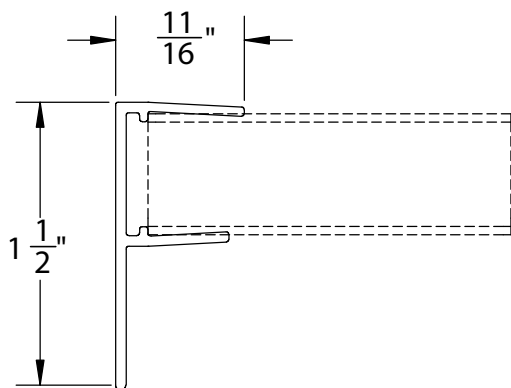
Part No.102237

Specifications:

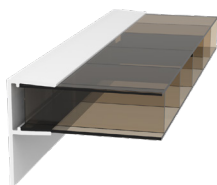
- Aluminum F-Section Used To Seal Open Ends Of 16 mm Double-Skin Acrylic Panels. Leg Directs Water Downward Into Gutter On Lower End Of Acrylic Panels And Oriented Upward To Stop Water Driving Up Into Hanger.

[CAD Download](#) | [PDF Download](#)**\$1.66/ft.**

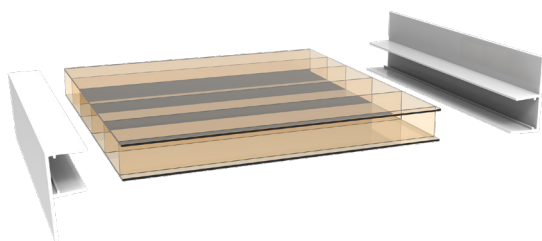
Front View



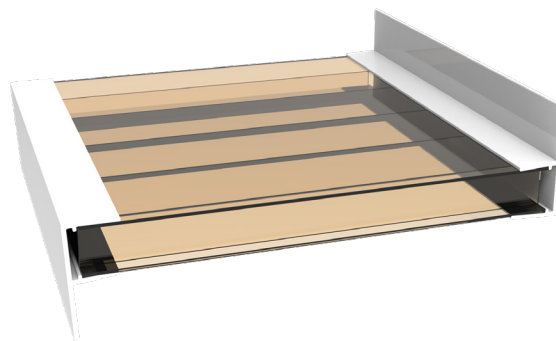
Iso View



Detail View



Application Typical Installation







# RAFTER SYSTEMS



## There is no substitute for Nature

We have a need to feel the warmth of the sun and the breeze on our faces. We long for the peace and vitality of the outdoors, of life beyond walls. Changes to interior lighting, furniture, colors, etc will only go so far.



# RAFTER SYSTEMS



100433

T-BAR RAFTER ASSEMBLY (ACRYLIC)

## T-BAR RAFTER ASSEMBLY (ACRYLIC)

Category: RAFTER

Part No. 100433

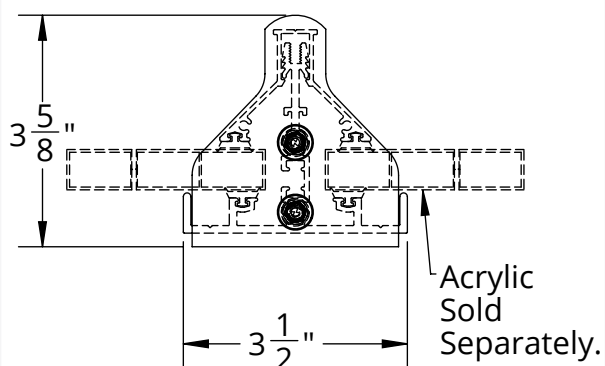
Specifications:

- Intermediate Aluminum T-Bar Rafter Assembly For 16 mm(5/8") Glazing Includes: T-Bar Rafter, T-Bar Cap, Rubber Gasketing & End Cap.

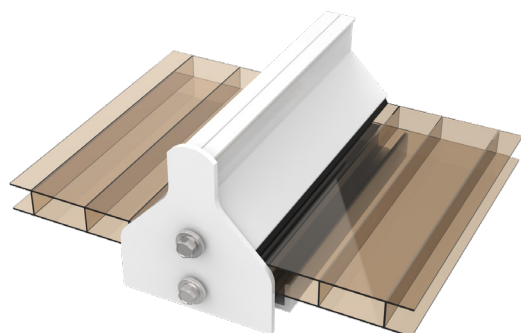
[CAD Download](#) | [PDF Download](#)

\$14.30/ft.

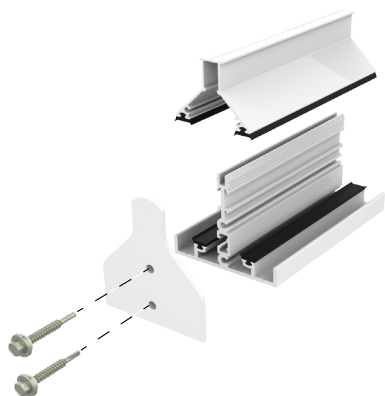
Front View



Iso View



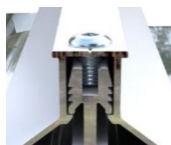
Detail View



## INCLUDED PARTS

#	PART NO.	PART NAME	QTY	UNIT	PRICE
1	100331	T-Bar Cap	1	FT	\$2.59
2	100438	T-Bar Rafter	1	FT	\$7.80
3	100468	T-Bar End Cap	1	EA	\$4.82
4	100290	Rubber Gasket	4	FT	\$0.32
5	100590	#12 Hex Head Screw	2	EA	\$0.30

## RELATED ITEMS



Optional T-Bar Rafter Fastening

Additional hardware to bolt T-Bar Cap to T-Bar Rafter is required when spans and load increase.

## Application Typical Installation



100801 T-BAR RAFTER FASCIA ASSEMBLY (ACRYLIC)

T-BAR RAFTER FASCIA ASSEMBLY (ACRYLIC)

Category: RAFTER

Part No.100801

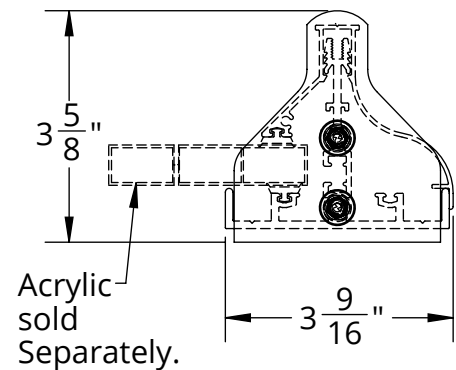
Specifications:

- Outer Edge Aluminum T-Bar Rafter Assembly For 16 mm (5/8") Glazing Includes: T-Bar Rafter, Fascia Cap, Rubber Gasketing & End Cap

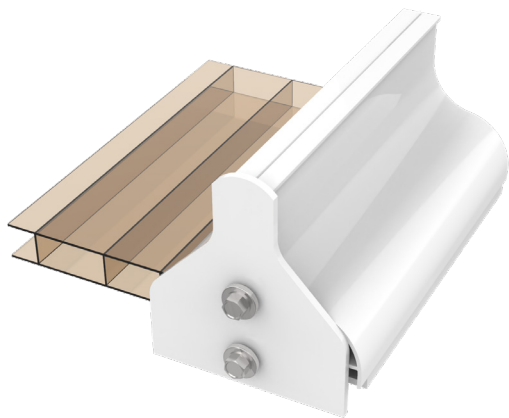
[CAD Download](#) | [PDF Download](#)

\$14.37/ft.

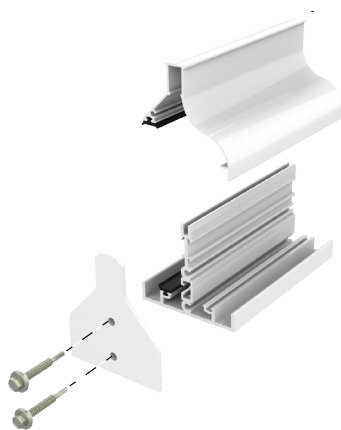
Front View



Iso View



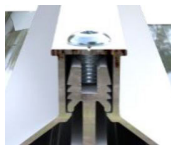
Detail View



INCLUDED PARTS

#	PART NO.	PART NAME	QTY	UNIT	PRICE
1	100444	T-Bar Fascia Cap	1	FT	\$2.59
2	100438	T-Bar Rafter	1	FT	\$7.80
3	100468	T-Bar End Cap	1	EA	\$4.82
4	100290	Rubber Gasket	4	FT	\$0.32
5	100590	#12 Hex Head Screw	2	EA	\$0.30

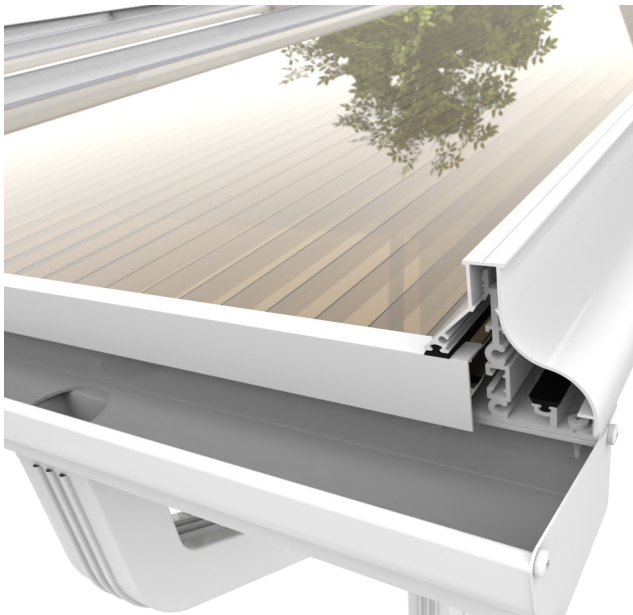
RELATED ITEMS



Optional T-Bar Rafter Fastening

Additional hardware to bolt T-Bar Cap to T-Bar Rafter is required when spans and load increase.

Application Typical Installation



100802

T-BAR RAFTER ASSEMBLY (GLASS)

## T-BAR RAFTER ASSEMBLY (GLASS)

Category: RAFTER

Part No. 100802

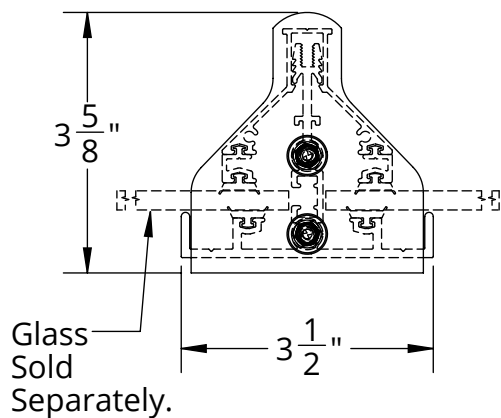
Specifications:

- Intermediate Aluminum T-Bar Rafter Assembly For 6 mm (1/4") Glazing Includes: T-Bar Rafter, T-Bar Cap, Glass Spline Insert, Rubber Gasketing & End Cap.

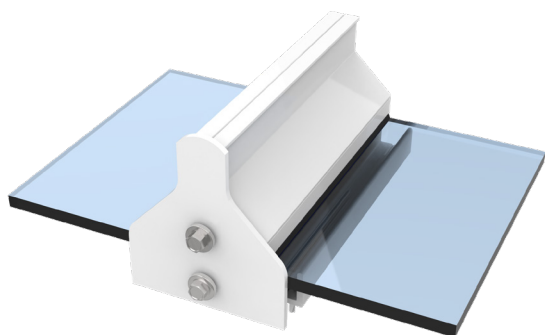
[CAD Download](#) | [PDF Download](#)

\$16.17/ft.

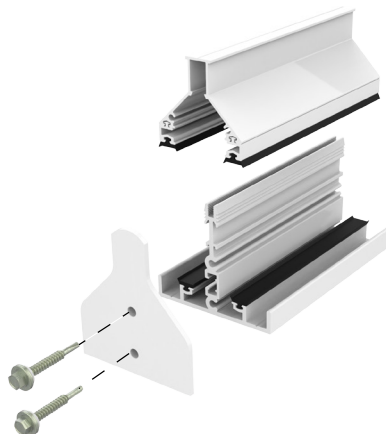
Front View



Iso View



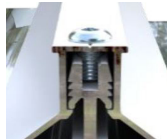
Detail View



## INCLUDED PARTS

#	PART NO.	PART NAME	QTY	UNIT	PRICE
1	100331	T-Bar Cap	1	FT	\$2.59
2	100438	T-Bar Rafter	1	FT	\$7.80
3	100373	T-Bar Glass Spline	2	FT	\$1.60
4	100468	T-Bar End Cap	1	FT	\$4.82
5	100290	Rubber Gasket	4	FT	\$0.32
6	100590	#12 Hex Head Screw	2	EA	\$0.30

## RELATED ITEMS



Optional T-Bar Rafter Fastening

Additional hardware to bolt T-Bar Cap to T-Bar Rafter is required when spans and load increase.

## Application Typical Installation





T-BAR RAFTER FASCIA ASSEMBLY (GLASS)

Category: RAFTER

Part No.100803

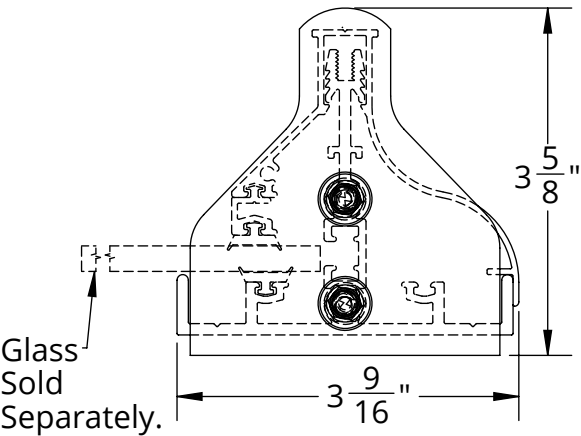
Specifications:

- Outer Edge Aluminum T-Bar Rafter Assembly For 6 mm (1/4") Glazing Includes: T-Bar Rafter, Fascia Cap, Glass Spline Insert, Rubber Gasketing & End Cap.

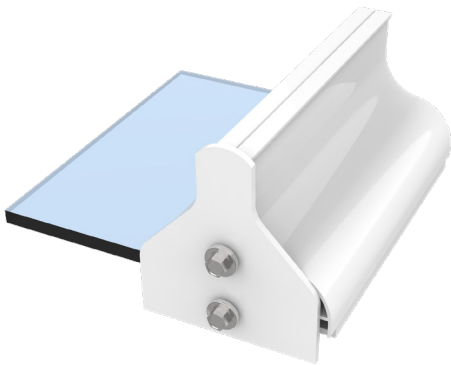
[CAD Download](#) | [PDF Download](#)

\$15.30/ft.

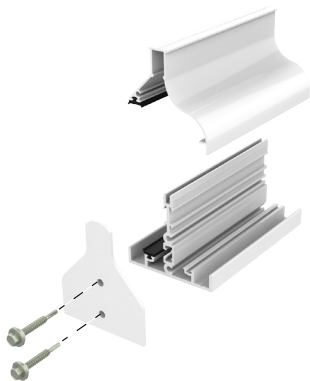
Front View



Iso View



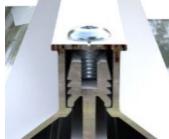
Detail View



INCLUDED PARTS

#	PART NO.	PART NAME	QTY	UNIT	PRICE
1	100444	T-Bar Fascia Cap	1	FT	\$2.59
2	100438	T-Bar Rafter	1	FT	\$7.80
3	100373	T-Bar Glass Spline	2	FT	\$1.60
4	100468	T-Bar End Cap	1	FT	\$4.82
5	100290	Rubber Gasket	4	FT	\$0.32
6	100590	#12 Hex Head Screw	2	EA	\$0.30

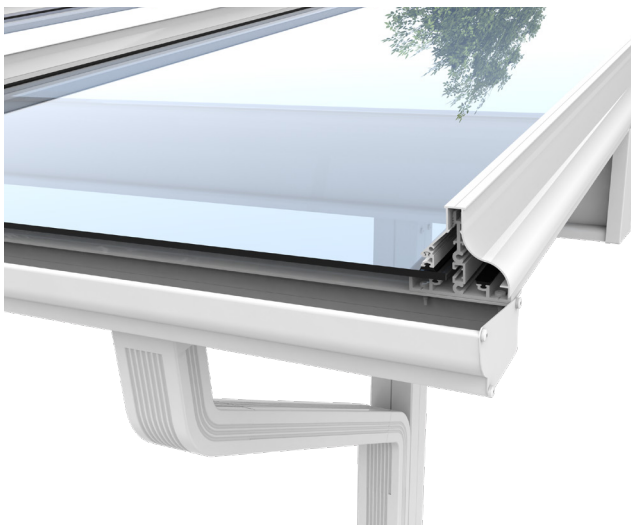
RELATED ITEMS



Optional T-Bar Rafter Fastening

Additional hardware to bolt T-Bar Cap to T-Bar Rafter is required when spans and load increase.

Application Typical Installation







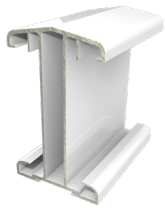
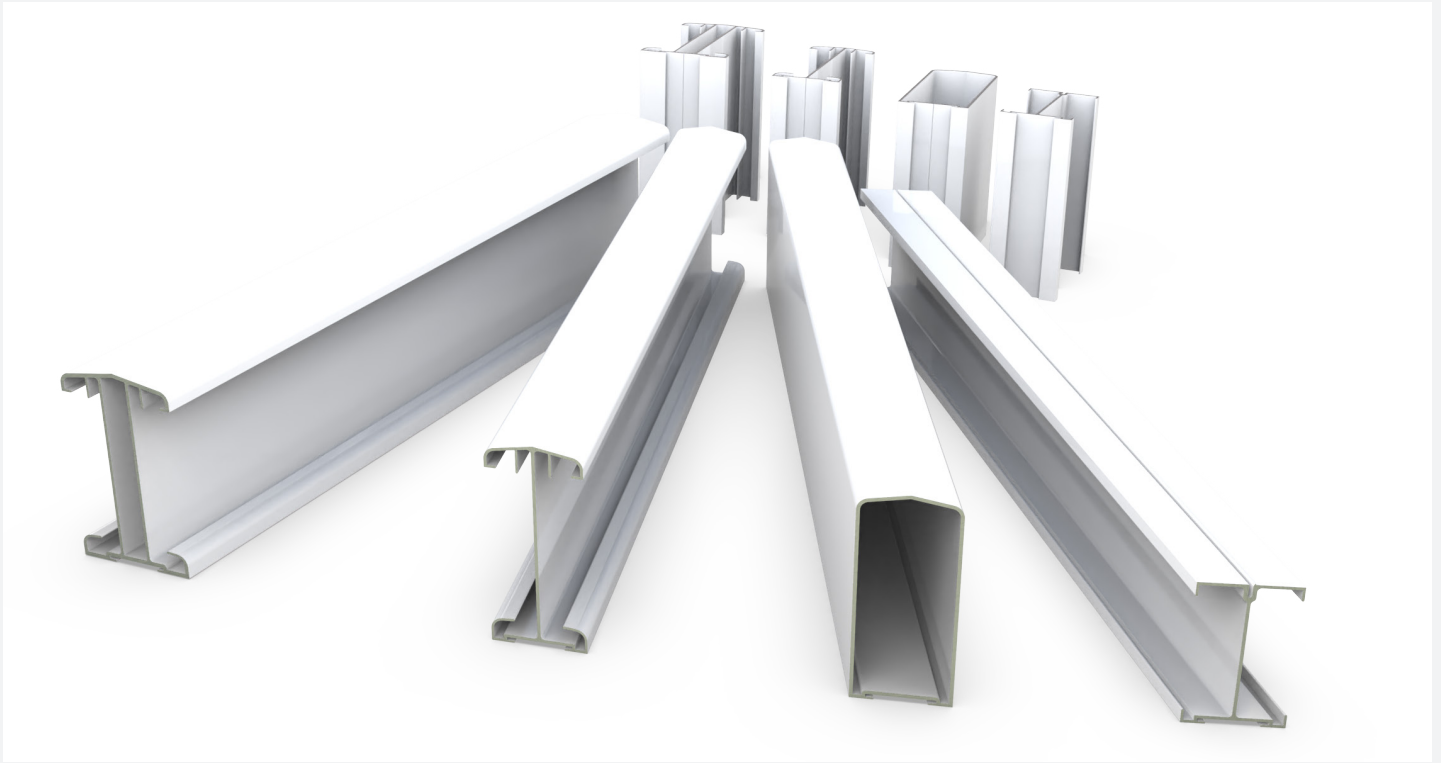
# BEAM SUPPORTS

## Expand and refine your living space

We develop products that elevate the outdoor-living experience with visual simplicity and quiet sophistication. Our designs compliment both architecture and landscape. Inspired by the outdoors, we create beautiful additions to homes that relax the soul while enhancing value. Our custom structures place you in harmony with the environment just outside your home.



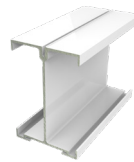
# BEAMS



100340



100365



100394



100427



100543



100854



100895

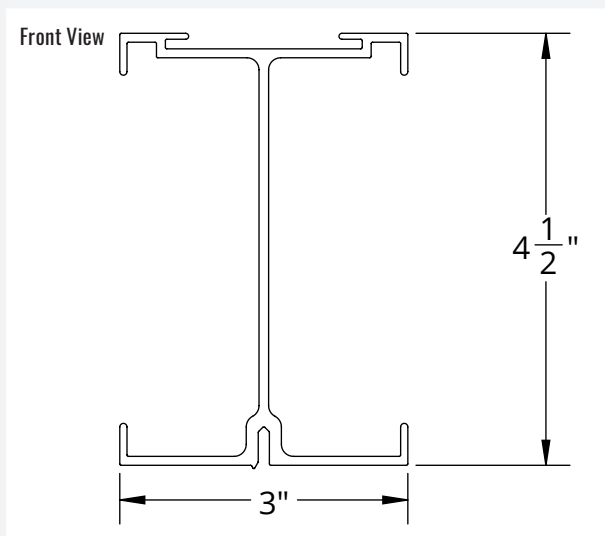
**100340****LIGHT DUTY BEAM****LIGHT DUTY BEAM**

Category: BEAM

Part No. 100340

Specifications:

- Lighter Beam For Smaller Covers And Spans (14' Max). Also Used As Horizontal Base For Framing Gable Ends.

[CAD Download](#) | [PDF Download](#)**\$7.93/ft.**

Iso View



## RELATED ITEMS



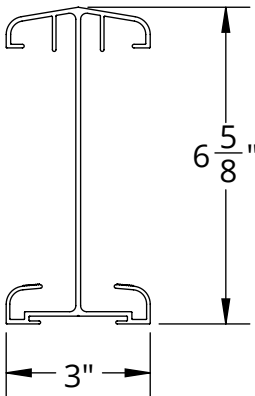
## Application Typical Installation



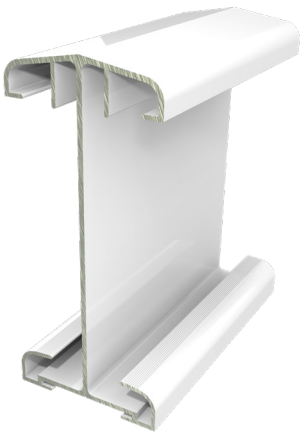
Detail View



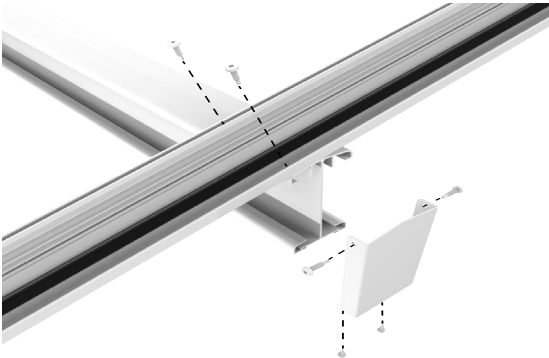
Front View



Iso View



Detail View



100365 HEAVY DUTY BEAM

HEAVY DUTY BEAM

Category: BEAM

Part No.100365

Specifications:

- Heavy Duty Beam Used As The Standard In Both Shed & Gable Covers. Pitched Top To Accommodate Various Roof Pitches. Channeled Lower Section To Hide Fasteners When Used As The Gable Ridge.

[CAD Download](#) | [PDF Download](#)

**\$9.96/ft.**

INCLUDED PARTS			
#	PART NO.	PART NAME	QTY
1	100365	Heavy Duty Beam	1

RELATED ITEMS



Application Typical Installation





**100394****TWIN WALL BEAM****TWIN WALL BEAM**

Category: BEAM

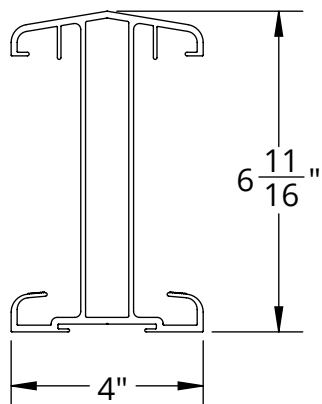
Part No. 100394

Specifications:

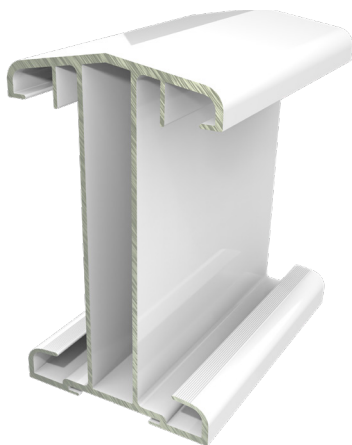
- Similar In Design To The Heavy Duty Beam. Can Be Substituted In Both Shed & Gable Covers And As The Gable Ridge. Twin Wall Design Allows For Greater Spans Between Supports. The hollow interior can also be used for cable routing.

[CAD Download](#) | [PDF Download](#)**\$18.26/ft.**

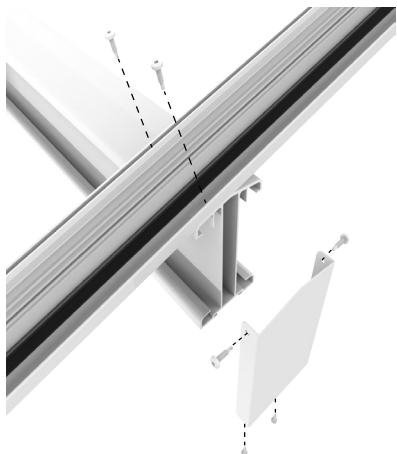
Front View



Iso View



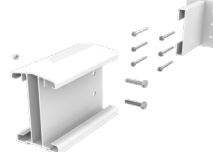
Detail View

**INCLUDED PARTS**

#	PART NO.	PART NAME	QTY
1	100394	Twin Wall Beam	1

**RELATED ITEMS**

100895



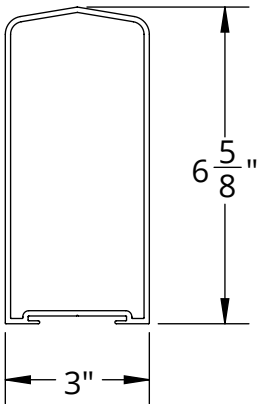
100573



101781

**Application Typical Installation**

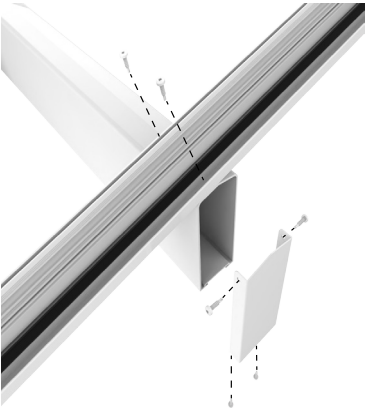
Front View



Iso View



Detail View



100427 BOX BEAM

BOX BEAM

Category: BEAM

Part No.100427

Specifications:

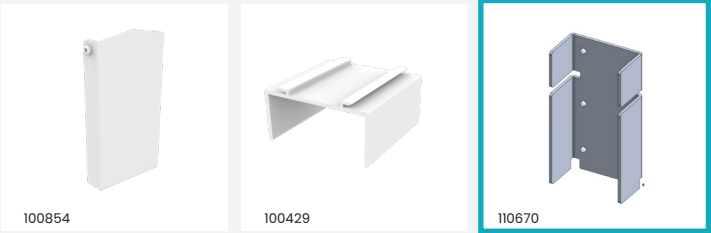
- Unique Clean Box Design As An Alternative To the Heavy Duty Beam. Ideal For Header For Sunroom Roofs Or Where Architectural Design Or Personal Preference Dictates. The hollow interior can also be used for cable routing.

[CAD Download](#) | [PDF Download](#)

**\$14.19/ft.**

INCLUDED PARTS			
#	PART NO.	PART NAME	QTY
1	100427	Box Beam	1

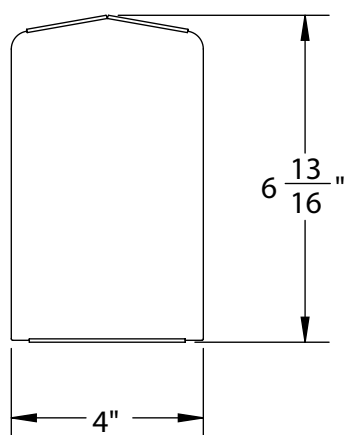
RELATED ITEMS



Application Typical Installation



Front View



## RIDGE BEAM COVER

Category: BEAM

Part No. 100543

Specifications:

- Formed Aluminum Plate Cleanly Covers The End Of Ridge Beams Used In Gable Covers.

[CAD Download](#) | [PDF Download](#)

**\$9.40/pkg.**

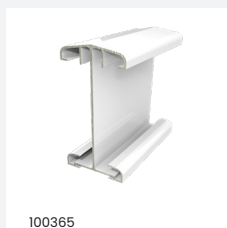
### INCLUDED PARTS

#	PART NO.	PART NAME	QTY
1	100543	Ridge Beam Cover	1
2	100591	#10 Button Head Screw	4

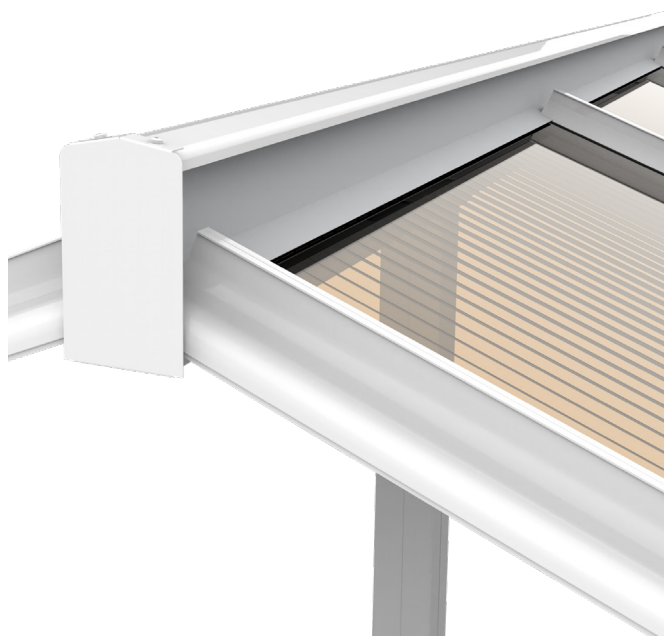
Iso View



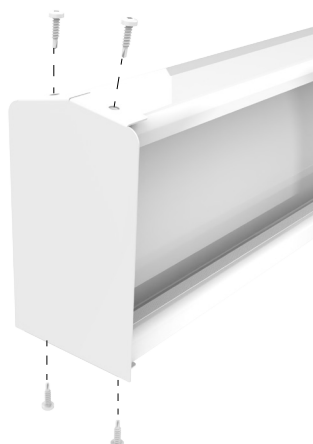
### RELATED ITEMS



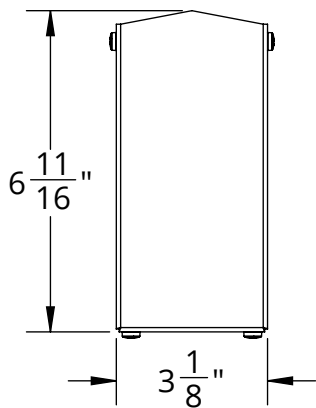
### Application Typical Installation



Detail View



Front View



HEAVY DUTY BEAM 90 DEGREE END CAP

Category: BEAM

Part No.100854

Specifications:

- Finish Ends Of The Heavy Duty Beam When Cut Squarely.

[CAD Download](#) | [PDF Download](#)

\$8.01/pkg.

INCLUDED PARTS

#	PART NO.	PART NAME	QTY
1	100486	Heavy Duty Beam End Cap	1
2	100591	#10 Button Head Screw	4

Iso View



RELATED ITEMS

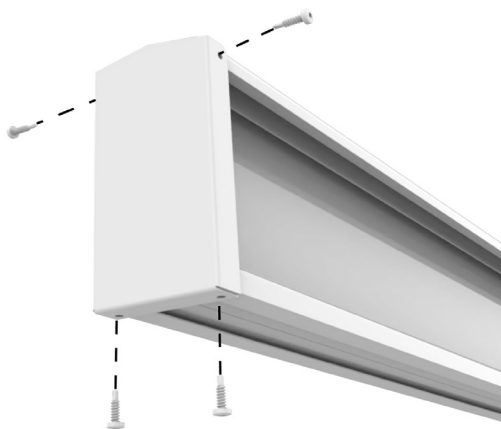


100365

Application Typical Installation



Detail View





100895

TWIN WALL BEAM 90 DEGREE END CAP

## TWIN WALL BEAM 90 DEGREE END CAP

Category: BEAM

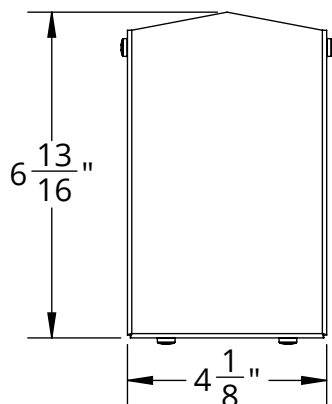
Part No.100895

Specifications:

- Finish Ends Of The Twin Wall Beam When Cut Squarely.

[CAD Download](#) | [PDF Download](#)
**\$8.49/pkg.**

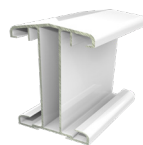
Front View



Iso View

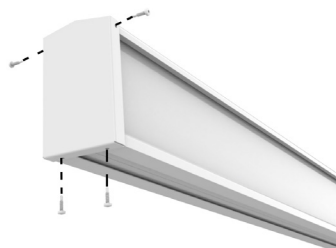


## RELATED ITEMS



100394

Detail View



## Application Typical Installation

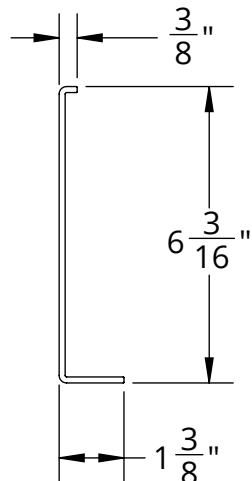




100405

HEAVY DUTY BEAM SPLICE - 16"

Front View



## HEAVY DUTY BEAM SPLICE - 16"

Category: SPLICE

Part No. 100405

Specifications:

- Insertable Aluminum Splice To Connect Two Sections Of Heavy Duty Beam Where Lengths Over 24 Foot Lengths Are Required.

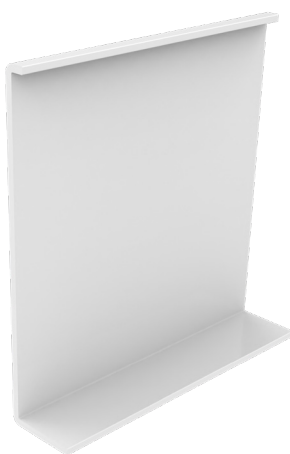
[CAD Download](#) | [PDF Download](#)

\$13.56/ft.

## INCLUDED PARTS

#	PART NO.	PART NAME	QTY
1	100407	Heavy Duty Beam Splice	1

Iso View

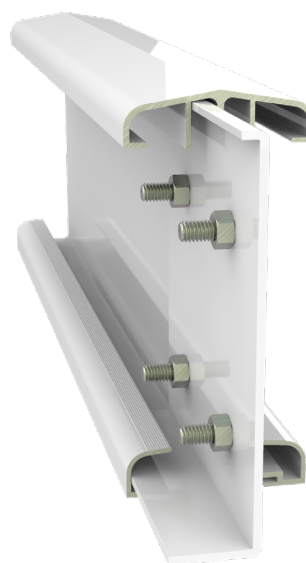


## RELATED ITEMS

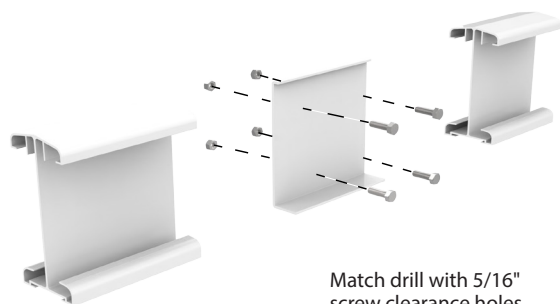


100365

## Application Typical Installation



Detail View



Match drill with 5/16"  
screw clearance holes



100537 LIGHT DUTY BEAM SPLICE

LIGHT DUTY BEAM SPLICE

Category: SPLICE

Part No.100537

Specifications:

- Insertable Aluminum Splice To Connect Two Sections Light Duty Beam Where Lengths Over 24 Foot Are Required.

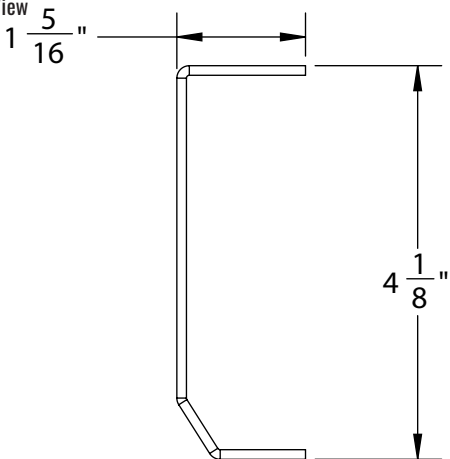
[CAD Download](#) | [PDF Download](#)

**\$17.72/ea.**

INCLUDED PARTS

#	PART NO.	PART NAME	QTY
1	100537	Light Duty Beam Splice	1

Front View



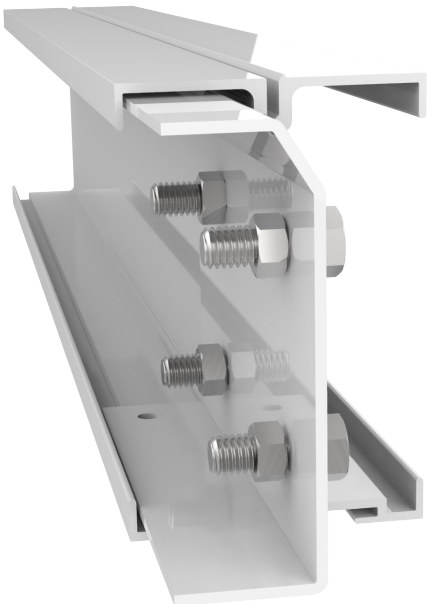
Iso View



RELATED ITEMS



Application Typical Installation



Detail View



**100531****TWIN WALL BEAM SPLICE****TWIN WALL BEAM SPLICE**

Category: SPLICE

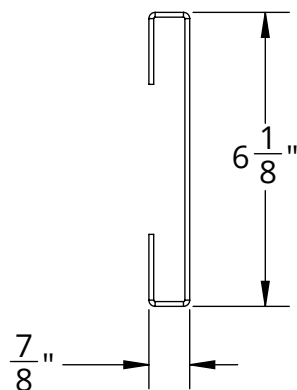
Part No. 100531

Specifications:

- Insertable Aluminum Splice To Connect Two Sections Of Hanging Rail Where Over 24 Foot Are Required.

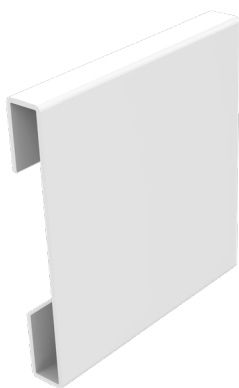
[CAD Download](#) | [PDF Download](#)
**\$22.82/ea.**

Front View

**INCLUDED PARTS**

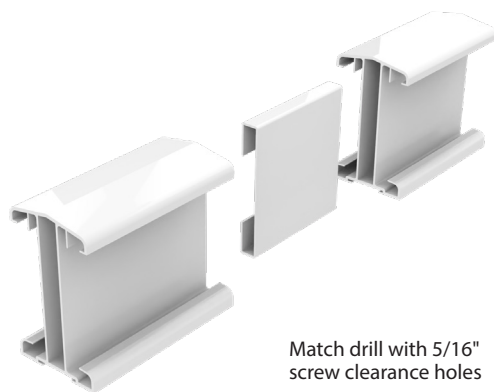
#	PART NO.	PART NAME	QTY
1	100531	Twin Wall Beam Splice	1

Iso View

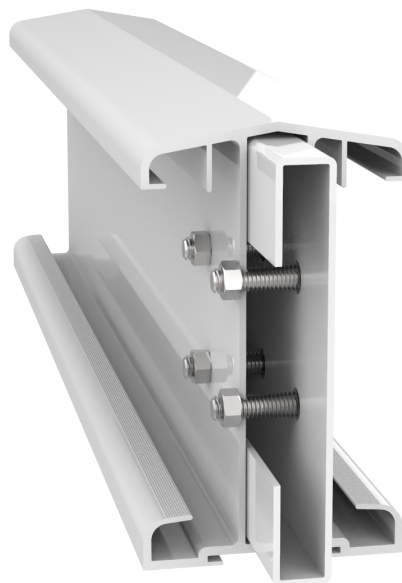
**RELATED ITEMS**

100394

Detail View



Match drill with 5/16"  
screw clearance holes

**Application Typical Installation**

100573 TWIN WALL MOUNTING BRACKET

TWIN WALL MOUNTING BRACKET

Category: ACCESSORY

Part No.100573

Specifications:

- Heavy Aluminum Bracket Used To Mount Twin Wall Beams Directly To Existing Structures.

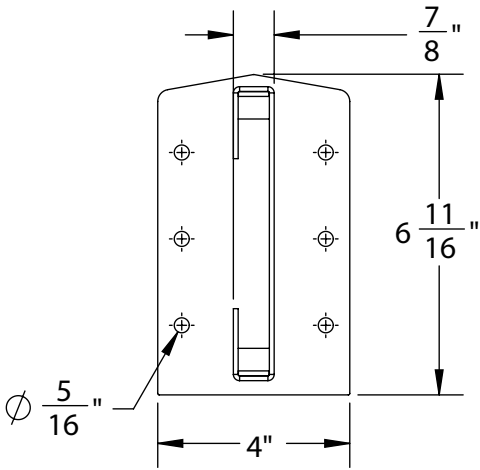
[CAD Download](#) | [PDF Download](#)

\$35.06/ea.

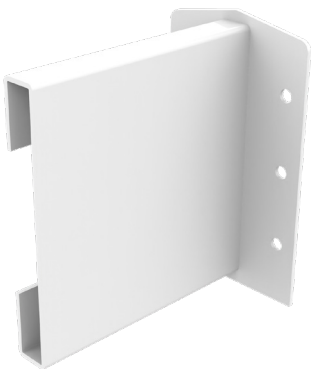
INCLUDED PARTS

#	PART NO.	PART NAME	QTY
1	100573	Twin Wall Mounting Bracket	1

Front View



Iso View

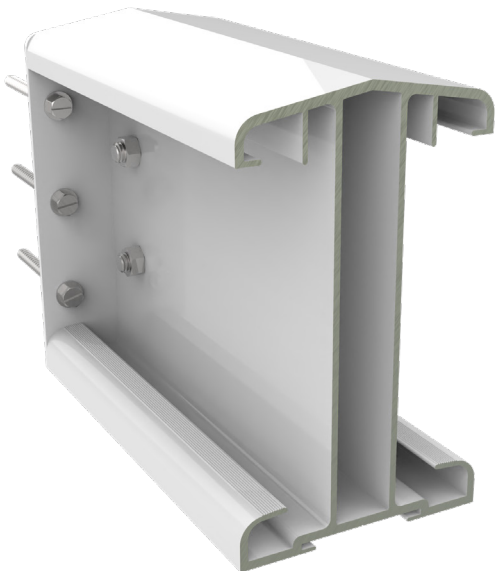


RELATED ITEMS

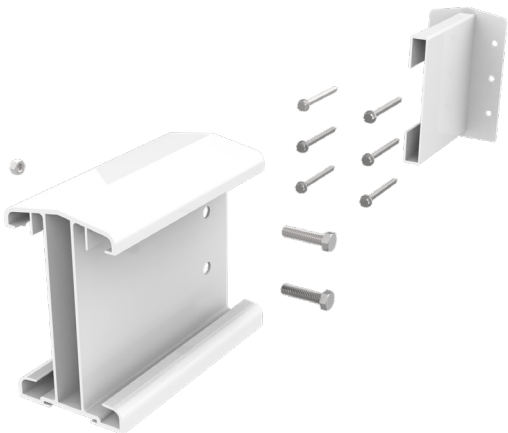


100394

Application Typical Installation



Detail View





100577

RIDGE FLASHING - 3 3/4" X 3 1/4" X 102"

## RIDGE FLASHING - 3 3/4" X 3 1/4" X 102"

Category: FLASHING

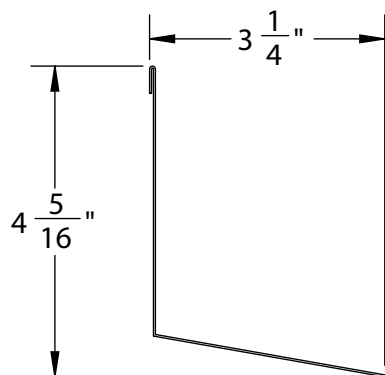
Part No. 100577

Specifications:

- Formed Aluminum Flashing Used In Gable Ridge Beams And In Shed Covers Where Beam Is Used In Place Of Hanging Rail.

[CAD Download](#) | [PDF Download](#)
**\$20.54/ea.**

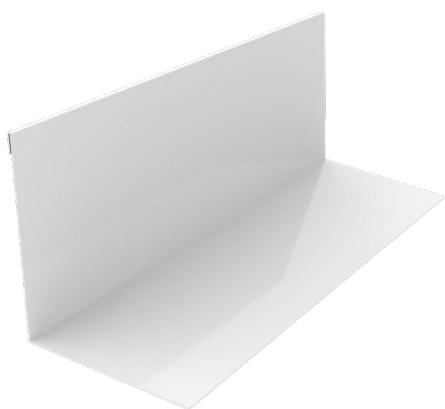
Front View



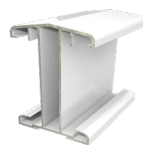
## INCLUDED PARTS

#	PART NO.	PART NAME	QTY
1	100577	Ridge Flashing - 3 3/4" x 3 3/4" x 102"	1

Iso View



## RELATED ITEMS

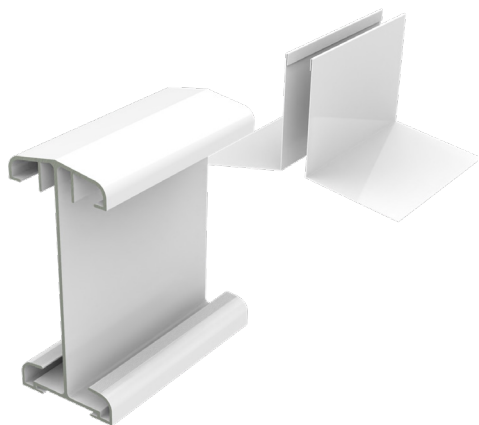


100394

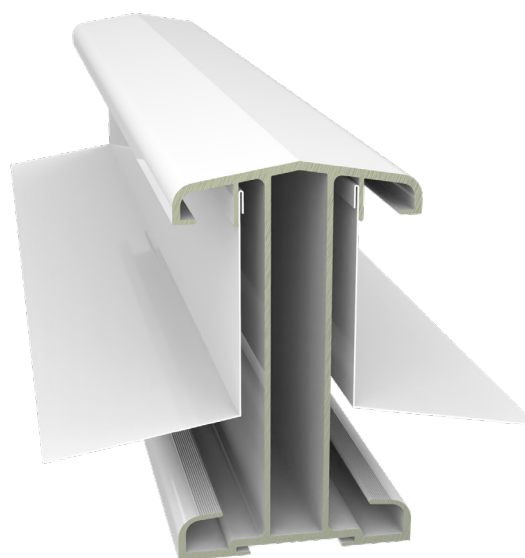


100365

Detail View



## Application Typical Installation







# POST COMPONENTS

## Expand your space

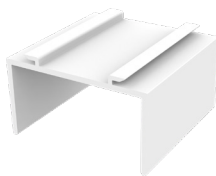
Don't feel trapped inside anymore. Our covers opens and expands the space where you feel at home. We design and craft our covers to fit your unique style and surroundings. American Patio Concepts takes a keen interest in the ease of installation of our products. We obsess over the manufacturing process for a problem-free installation.



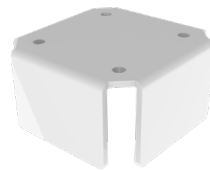
# POST ACCESSORIES



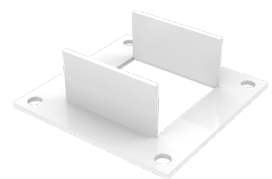
100425



100429



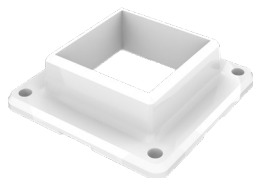
100523



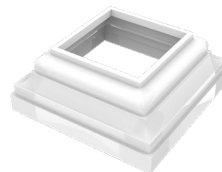
100533



103495

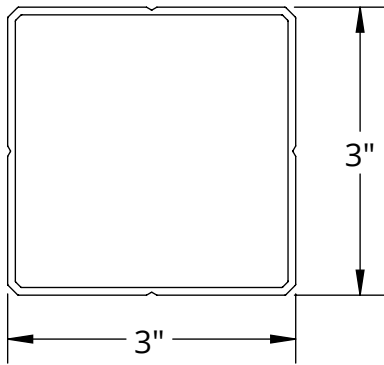


100282

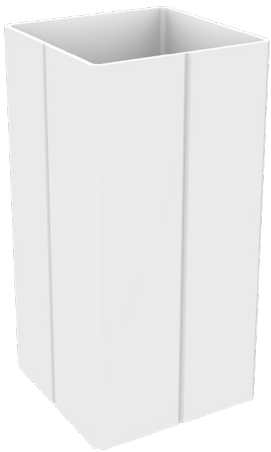


100280

Front View



Iso View



Detail View



**100425 PATIO COVER POST**

**PATIO COVER POST**

Category: MOUNT  
Part No. 100425, 101934, 101935 & 103341  
Specifications:

- Square Extruded Post, Beveled On Each Of The Four Corners. Standard With All Covers.

[CAD Download](#) | [PDF Download](#)

1. \$6.52/ft.

INCLUDED PARTS					
#	PART NO.	PART NAME	QTY	UNIT	PRICE
1	100425	Patio Cover Post	1	FT	\$6.52
2	100280	Patio Cover Post - 102"	1	EA	\$51.14
3	101935	Patio Cover Post - 120"	1	EA	\$60.17
4	103341	Patio Cover Post - 144"	1	EA	\$72.20

RELATED ITEMS



Application Typical Installation





**100429****POST TOP SHOE (EXTRUDED) - 3"****POST TOP SHOE (EXTRUDED) - 3"**

Category: COVER

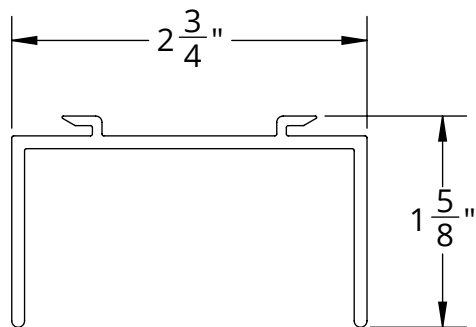
Part No. 100429

Specifications:

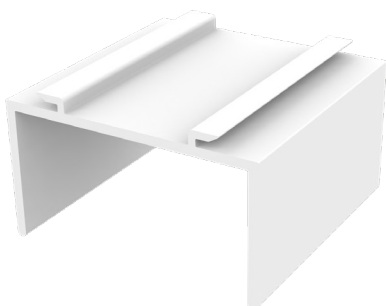
- Unique Top Shoe Inserts Into Channel On Underside Of Beams And Slides Along Length Of Beam To Desired Position.

[CAD Download](#) | [PDF Download](#)**\$1.71/ea.**

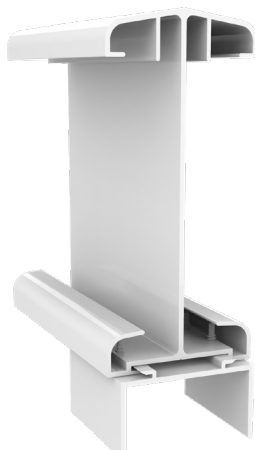
Front View



Iso View



Detail View

**INCLUDED PARTS**

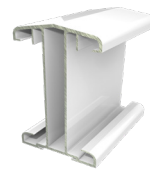
#	PART NO.	PART NAME	QTY
1	100429	Post Top Shoe (Extruded) - 3"	1

**RELATED ITEMS**

100425



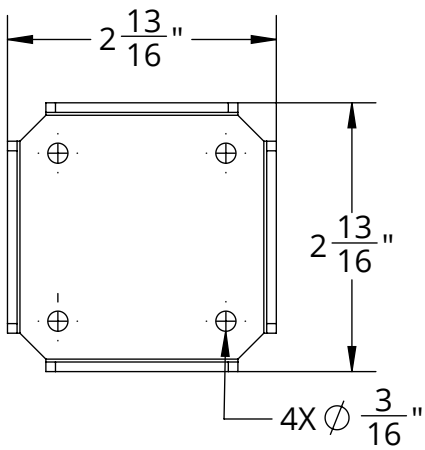
100365



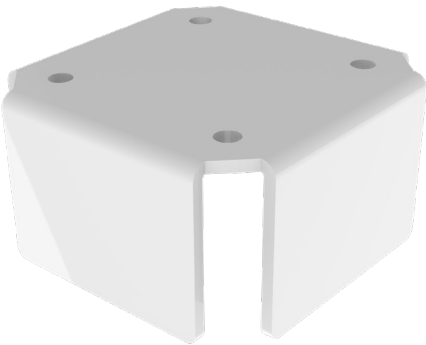
100394

**Application Typical Installation**

Front View



Iso View



Detail View



**100523** **INTERNAL TOP/BOTTOM POST SHOE**

**INTERNAL TOP/BOTTOM POST SHOE**

Category: MOUNT

Part No. 100523

Specifications:

- Bracket Attaches To Beam Or Post Mounting Surface And Inserts Fully Into Patio Cover Post To Become Completely Concealed.

[CAD Download](#) | [PDF Download](#)

**\$6.99/ea.**

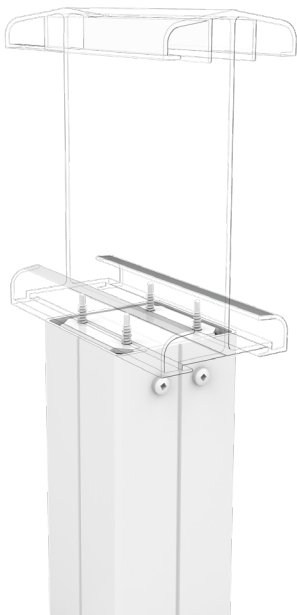
**INCLUDED PARTS**

#	PART NO.	PART NAME	QTY
1	100523	Internal Top/Bottom Post Shoe	1

**RELATED ITEMS**



**Application Typical Installation**



**103495****UNIVERSAL BEAM POST BRACKET****UNIVERSAL BEAM POST BRACKET**

Category: MOUNT

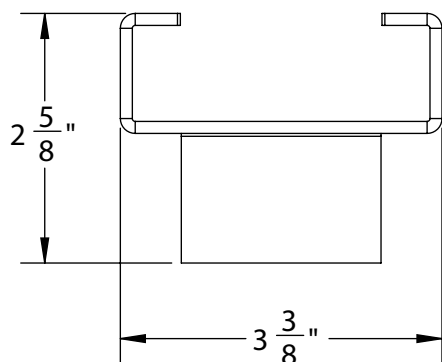
Part No. 103495

Specifications:

- Unique Top Shoe Inserts Into Channel On Underside Of Beams And Slides Along Length Of Beam To Desired Position.

[CAD Download](#) | [PDF Download](#)**\$12.86/ea.**

Front View

**INCLUDED PARTS**

#	PART NO.	PART NAME	QTY
1	100429	Post Top Shoe (Extruded)-3"	1

Iso View

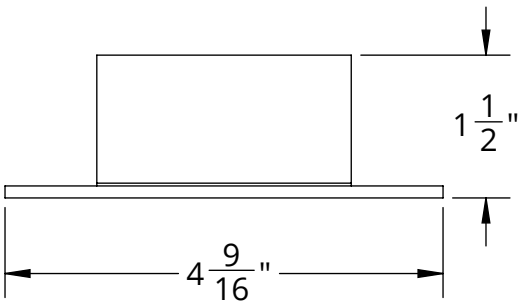
**RELATED ITEMS**

100425

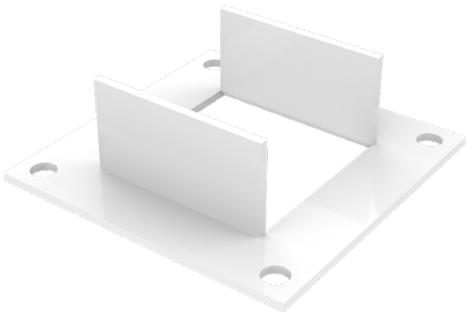
Detail View

**Application Typical Installation**

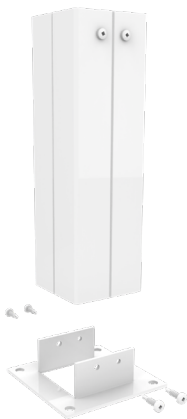
Front View



Iso View



Detail View



100533

POST BASE SHOE

POST BASE SHOE

Category: SHOE

Part No. 100533

Specifications:

- Post Base For Mounting Directly To Deck Or Slab. Upper Legs Insert Into Patio Cover Beveled Post.

[CAD Download](#) | [PDF Download](#)

**\$8.15/ea.**

INCLUDED PARTS

#	PART NO.	PART NAME	QTY
1	100533	Post-Base Shoe	1

RELATED ITEMS



100425

Application Typical Installation





100282

3" POST BASE (CAST)

## 3" POST BASE (CAST)

Category: CAP

Part No. 100282

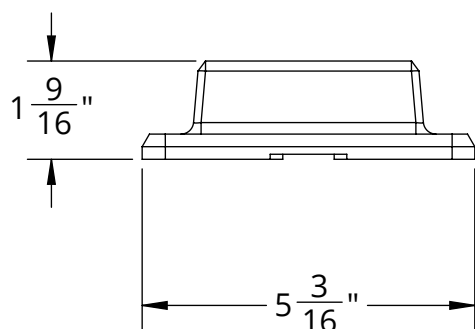
Specifications:

- Alternative Patio Cover Post Base.

[CAD Download](#) | [PDF Download](#)

\$10.47/ea.

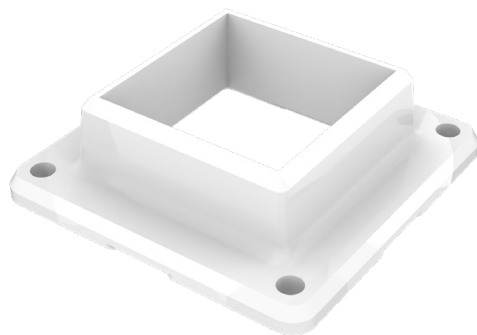
Front View



## INCLUDED PARTS

#	PART NO.	PART NAME	QTY
1	100282	3" Post Base (Cast)	1

Iso View



## RELATED ITEMS



100425

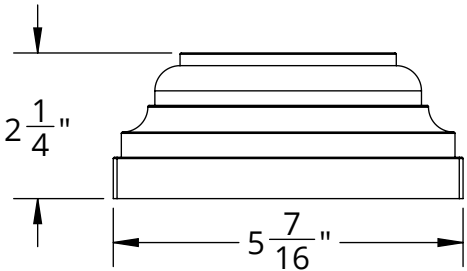
## Application Typical Installation



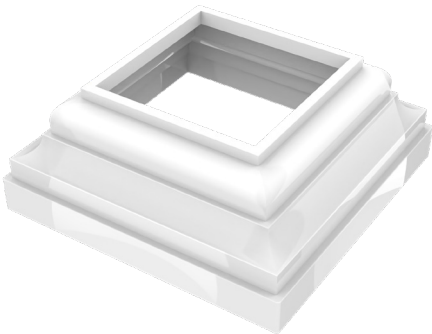
Detail View



Front View



Iso View



Detail View



100280

POST BASE SHOE COVER

POST BASE SHOE COVER

Category: COVER

Part No. 100280

Specifications:

- Decorative Cover For Post Base Shoe to Conceal Fasteners.

[CAD Download](#) | [PDF Download](#)

\$10.47/ea.

INCLUDED PARTS

#	PART NO.	PART NAME	QTY
1	100280	Post Base Shoe Cover	1

RELATED ITEMS



100425

Application Typical Installation







# GUTTER SYSTEMS

A two-story house with grey horizontal siding and white trim. The house features a large pergola with a white roof and black frame over the front porch and patio area. The porch has a set of wooden steps leading up to a double door. The patio is furnished with a grill, a table, and chairs. The house is surrounded by a lush green lawn, manicured bushes, and a dense forest of tall evergreen trees in the background.

**DEFINE YOUR SPACE**

Enjoy the open air with comfort



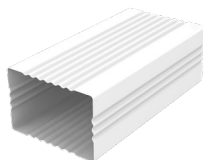
# GUTTER ACCESSORIES



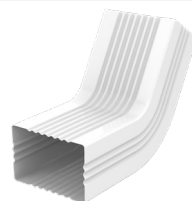
100385



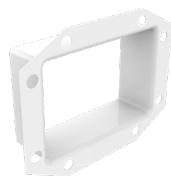
101142



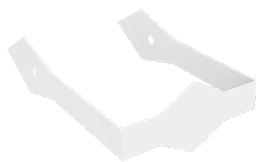
102057



102060



102061



102062

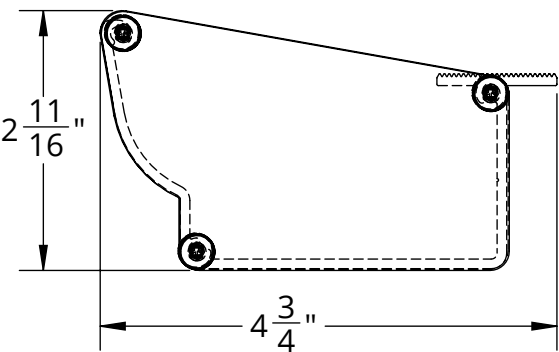


100407



101141

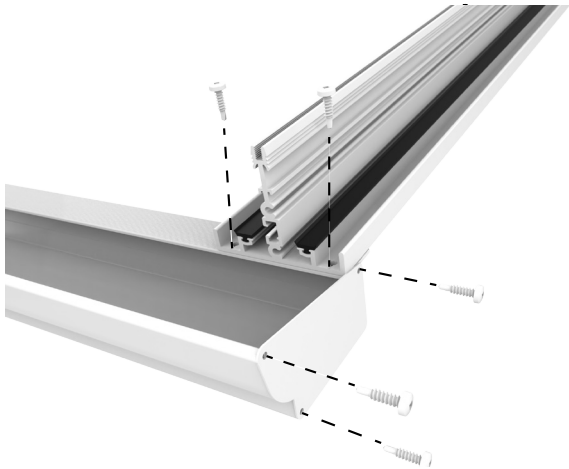
Front View



Iso View



Detail View



100385

LOW PROFILE GUTTER WITH END CAPS

LOW PROFILE GUTTER WITH END CAPS

Category: GUTTER

Part No. 100385

Specifications:

- Low Outer Face In Line With 16 mm Glazing To Prevent Potential Accumulation Of Snow On Cover.

[CAD Download](#) | [PDF Download](#)

**\$7.93/ft.**

INCLUDED PARTS

#	PART NO.	PART NAME	QTY
1	100386	Low Profile Gutter	1
2	100490	Low Profile Gutter Cap	2
3	100591	#10 Button Head Screw	6
4	102061	2x3 Gutter Downpipe Outlet	1
5	102057	2x3 Gutter Downpipe - 10'	1
6	102060	2x3 Gutter Downpipe Elbow	2
7	102062	2x3 Gutter Downpipe Strap	2

Application Typical Installation



101142

COLONIAL GUTTER WITH END CAPS

## COLONIAL GUTTER WITH END CAPS

Category: GUTTER

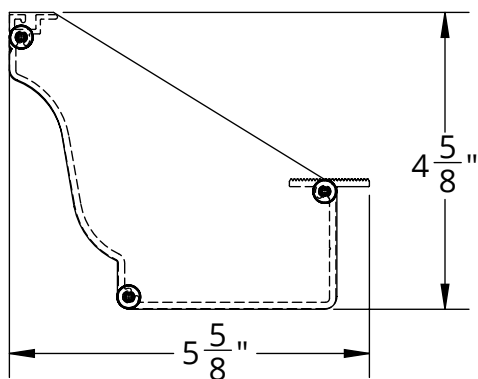
Part No. 101142

Specifications:

- Heavy Duty Extruded Gutter Designed To Visually Mirror Appearance Of Conventional Gutters.

[CAD Download](#) | [PDF Download](#)
**\$11.29/ft.**

Front View



Iso View



Detail View



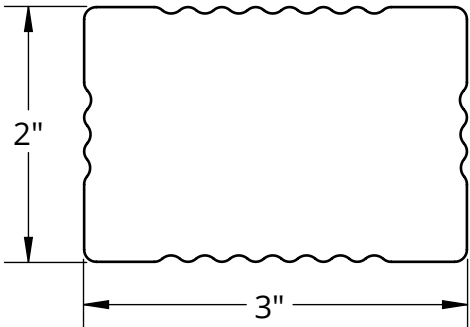
## INCLUDED PARTS

#	PART NO.	PART NAME	QTY
1	100403	Colonial Gutter	1
2	100488	Colonial Gutter End Cap	2
3	100591	#10 Button Head Screw	6
4	102061	2x3 Gutter Downpipe Outlet	1
5	102057	2x3 Gutter Downpipe - 10'	1
6	102060	2x3 Gutter Downpipe Elbow	2
7	102062	2x3 Gutter Downpipe Strap	2

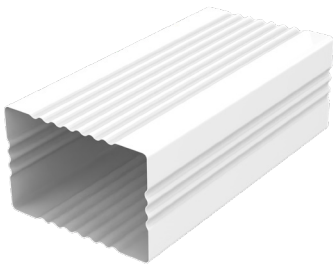
Application Typical Installation



Front View



Iso View



Detail View



**102057      2 x 3 GUTTER DOWNPIPE -10'**

**2 x 3 GUTTER DOWNPIPE -10'**

Category: GUTTER

Part No. 102057

Specifications:

- Conventional Formed Aluminum Gutter Downpipe.

[CAD Download](#) | [PDF Download](#)

**\$16.81/ea.**

INCLUDED PARTS			
#	PART NO.	PART NAME	QTY
1	102057	2x3 Gutter Downpipe - 10'	1

Application Typical Installation





102060

2 x 3 GUTTER DOWNPIPE ELBOW

## 2 x 3 GUTTER DOWNPIPE ELBOW

Category: GUTTER

Part No. 102060

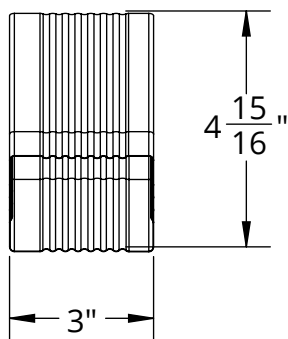
Specifications:

- Conventional Formed Aluminum 135° Gutter Downpipe Elbows.

[CAD Download](#) | [PDF Download](#)

\$1.97/ea.

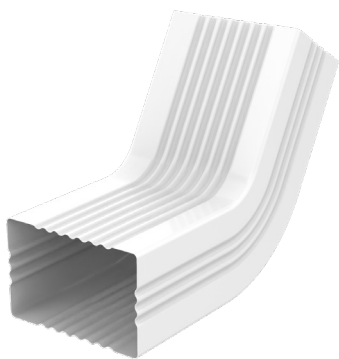
Front View



## INCLUDED PARTS

#	PART NO.	PART NAME	QTY
1	102060	Gutter Downpipe Elbow	1

Iso View



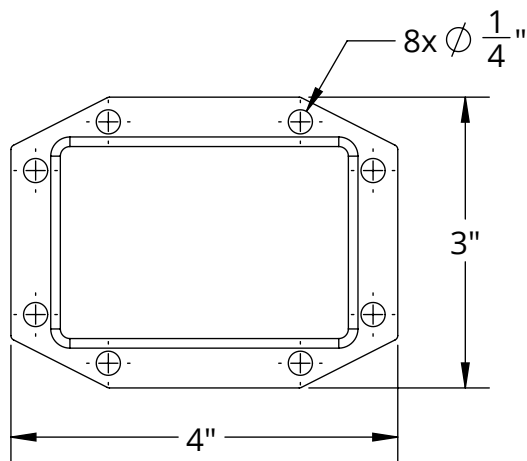
Detail View



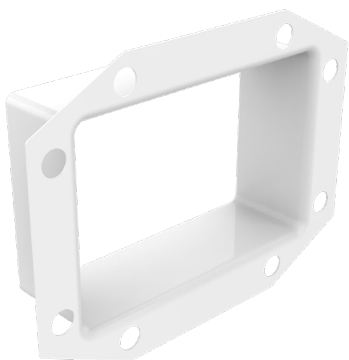
Application Typical Installation



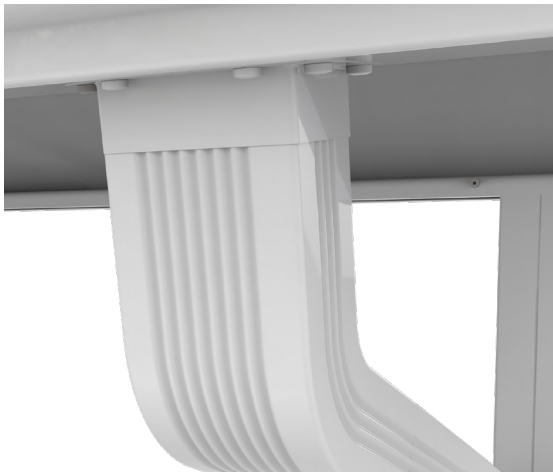
Front View



Iso View



Detail View



102061 2 x 3 GUTTER DOWNPIPE OUTLET

2 x 3 GUTTER DOWNPIPE OUTLET

Category: GUTTER

Part No. 102061

Specifications:

- Standard Gutter Outlet Affixed To Underside Of Gutter Allowing Attachment Of Downpipe Or Elbows.

[CAD Download](#) | [PDF Download](#)

**\$2.49/ea.**

INCLUDED PARTS			
#	PART NO.	PART NAME	QTY
1	102061	Gutter Downpipe Outlet	1

Application Typical Installation



**102062****2 x 3 GUTTER DOWNPIPE STRAP****2 x 3 GUTTER DOWNPIPE STRAP**

Category: GUTTER

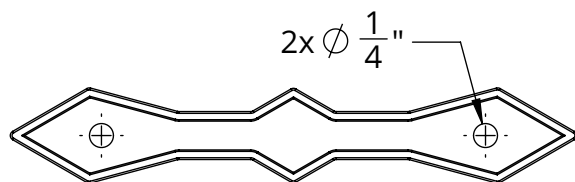
Part No. 102062

Specifications:

- Standard Aluminum Straps To Wrap Around Downpipe Attaching To Post Or Adjacent Structure.

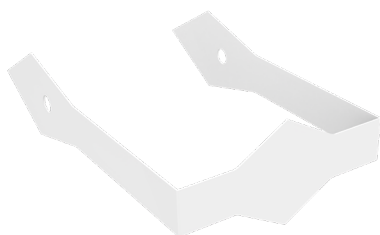
[CAD Download](#) | [PDF Download](#)
**\$2.39/ea.**

Front View

**INCLUDED PARTS**

#	PART NO.	PART NAME	QTY
1	102062	Gutter Downpipe Straps	1

Iso View



Detail View



Application Typical Installation



100407                      LOW PROFILE GUTTER SPLICE -16"

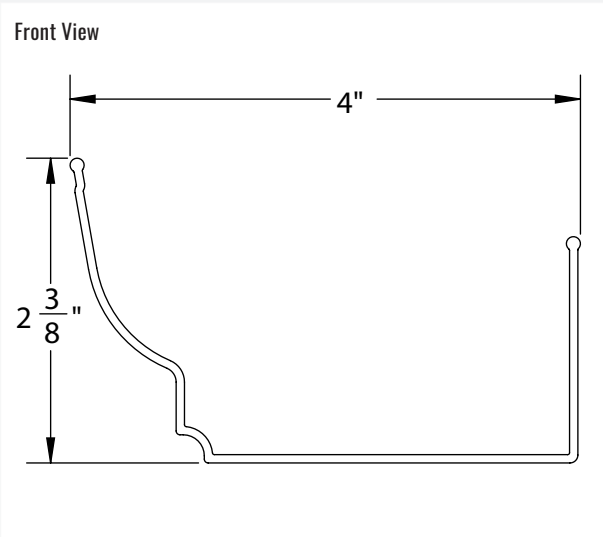
LOW PROFILE GUTTER SPLICE -16"

Category: SPLICE  
Part No.100407  
Specifications:

- Insertable Aluminum Splice To Connect Two Sections Of Gutter Where Lengths Over 24 Foot Are Required.

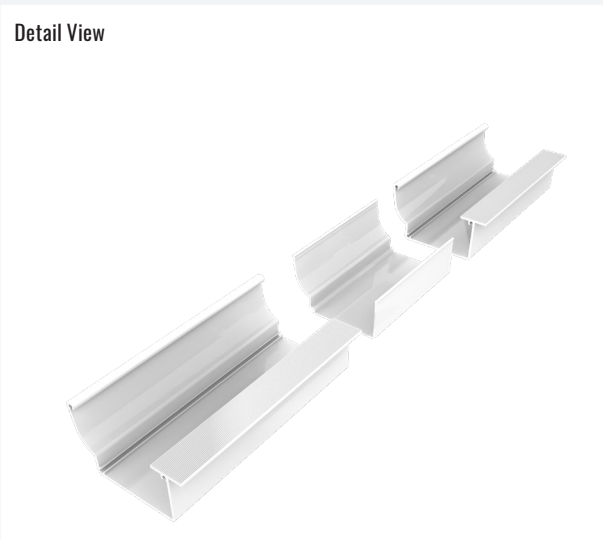
[CAD Download](#) | [PDF Download](#)

\$16.86/ea.

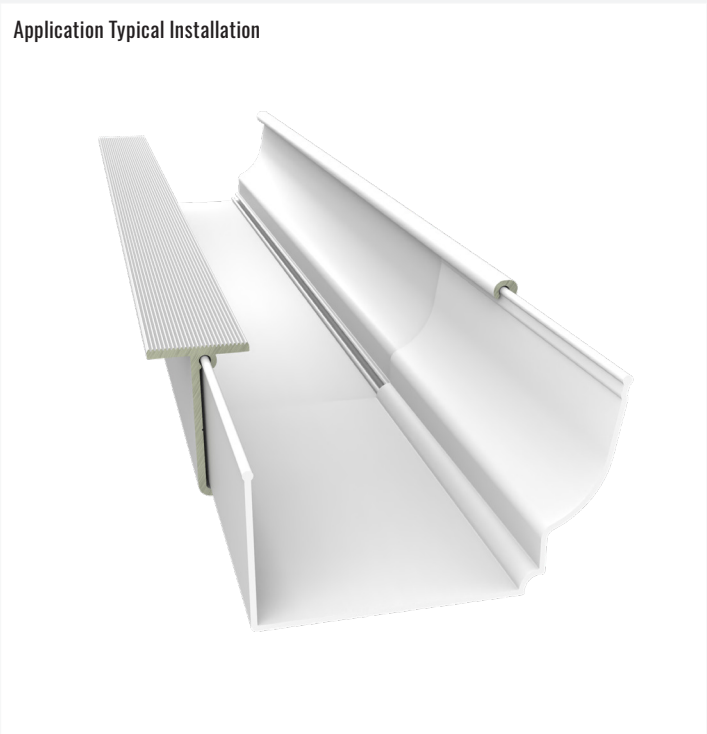


INCLUDED PARTS

#	PART NO.	PART NAME	QTY
1	100407	Low Profile Gutter Splice	1



Application Typical Installation





101141

COLONIAL GUTTER SPLICE - 16"

## COLONIAL GUTTER SPLICE - 16"

Category: SPLICE

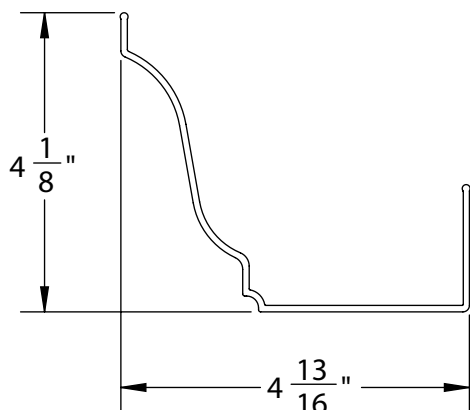
Part No. 101141

Specifications:

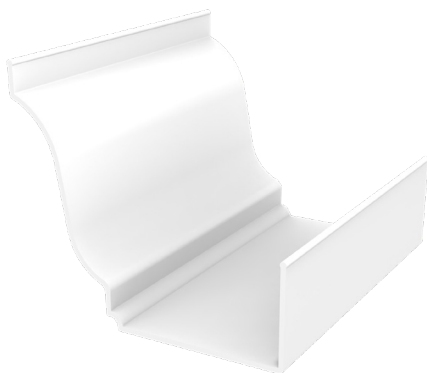
- Insertable Aluminum Splice To Connect Two Sections Of Gutter Where Lengths Over 24 Foot Lengths Are Required.

[CAD Download](#) | [PDF Download](#)
**\$19.18/ea.**

Front View



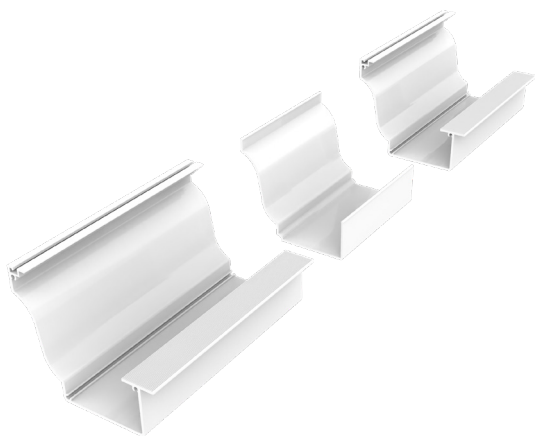
Iso View



## INCLUDED PARTS

#	PART NO.	PART NAME	QTY
1	101141	Colonial Gutter Splice - 16"	1

Detail View



Application Typical Installation

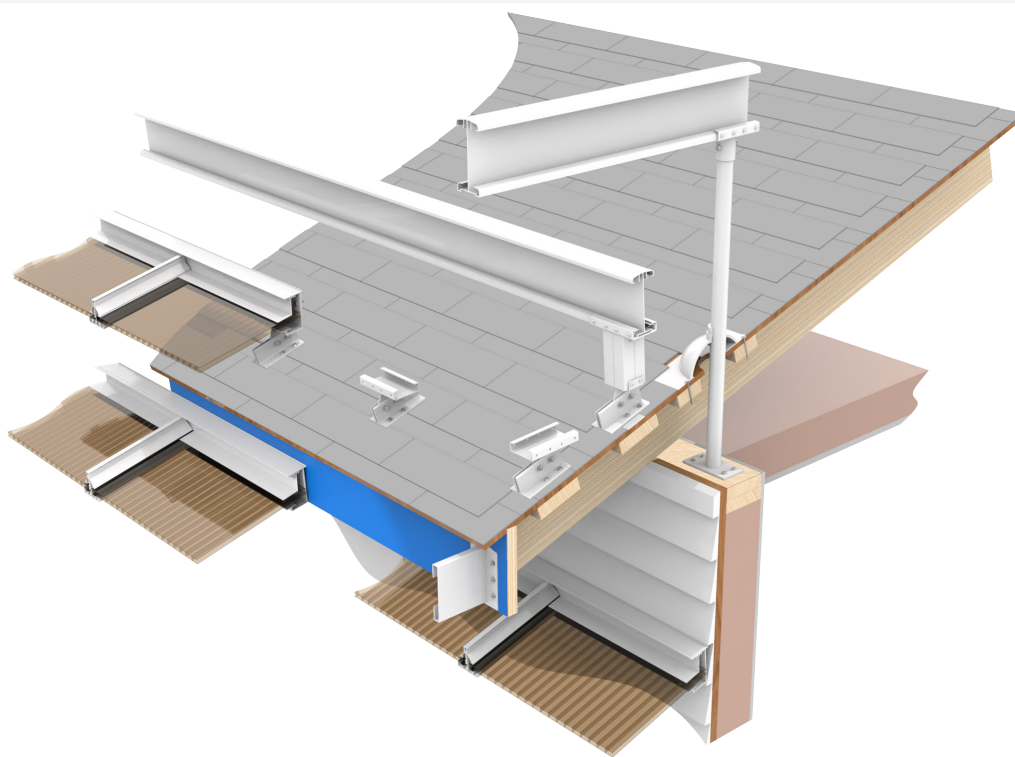


# ROOF MOUNTING SYSTEMS





# MOUNTING SYSTEMS



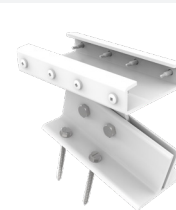
101335



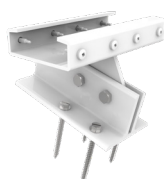
101714



101728



101729



101734



101798



101800



101804





**101335 ROOF RISER PACKAGE - HANGER****ROOF RISER PACKAGE - HANGER**

Category: MOUNT

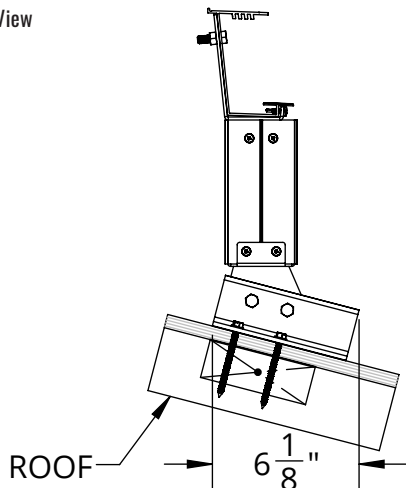
Part No. 101335

Specifications:

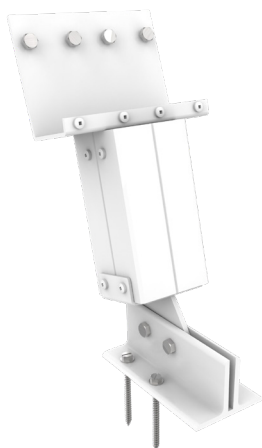
- Allows Hanging Rail To Be Elevated Above Existing Roofs To Achieve Desired Height And/Or Necessary Cover Pitch.

[CAD Download](#) | [PDF Download](#)**\$87.04/pkg.**

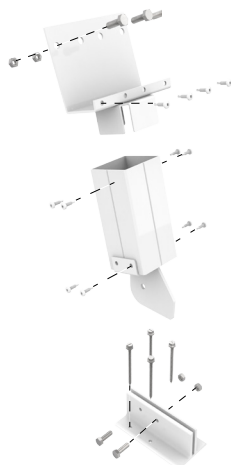
Front View



Iso View



Detail View

**INCLUDED PARTS**

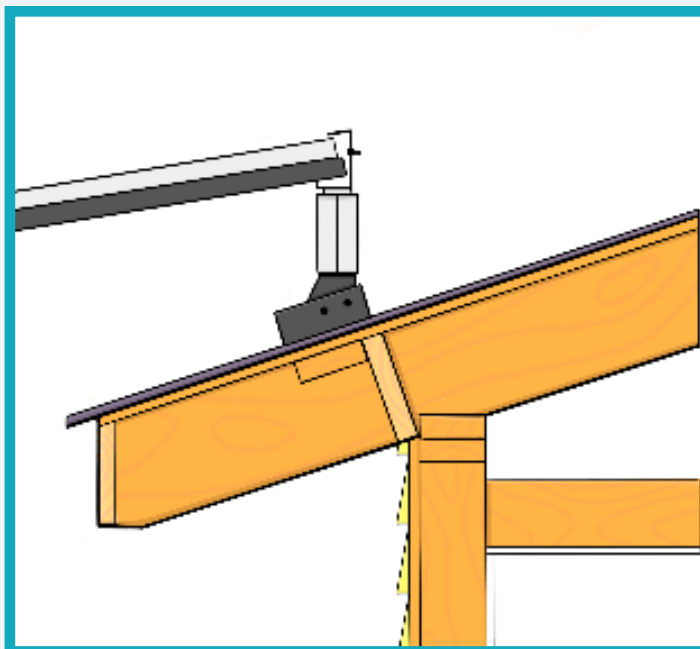
#	PART NO.	PART NAME	QTY
1	101709	Post Hanging Rail Connector	1
2	100425	Patio Cover Post	1
3	101710	Roof Mount Post Connector	1
4	100423	Wall Mount Bracket - 5.75"	1
5	100588	#14 Lag Screw	4
6	100587	Bolt, 5/16-18 x 1	6
7	100589	Nut, 5/16-18	6
8	100591	#10 Button Head Screw	12

**RELATED ITEMS**

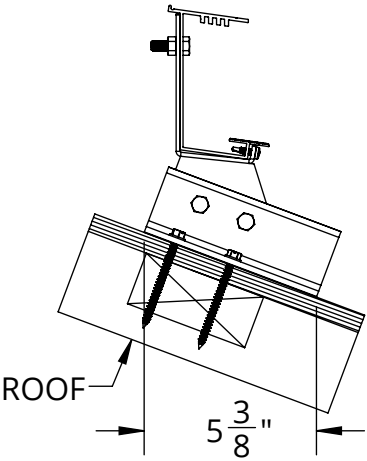
100400



100365



Front View



Iso View



Detail View



101714 ROOF MOUNT PACKAGE - HANGER

ROOF MOUNT PACKAGE - HANGER

Category: MOUNT

Part No. 101714

Specifications:

- Allows Hanging Rail To Be Mounted To Existing Roofs To Achieve Desired Height And/Or Necessary Cover Pitch.

[CAD Download](#) | [PDF Download](#)

\$49.75/pkg.

INCLUDED PARTS

#	PART NO.	PART NAME	QTY
1	101713	Roof Mount Hanging Rail Connector	1
2	100423	Wall Mount Bracket - 5.75"	1
3	100588	#14 Lag Screw	4
4	100587	Bolt, 5/16-18 x 1	6
5	100589	Nut, 5/16-18	6
6	100591	#10 Button Head Screw	4

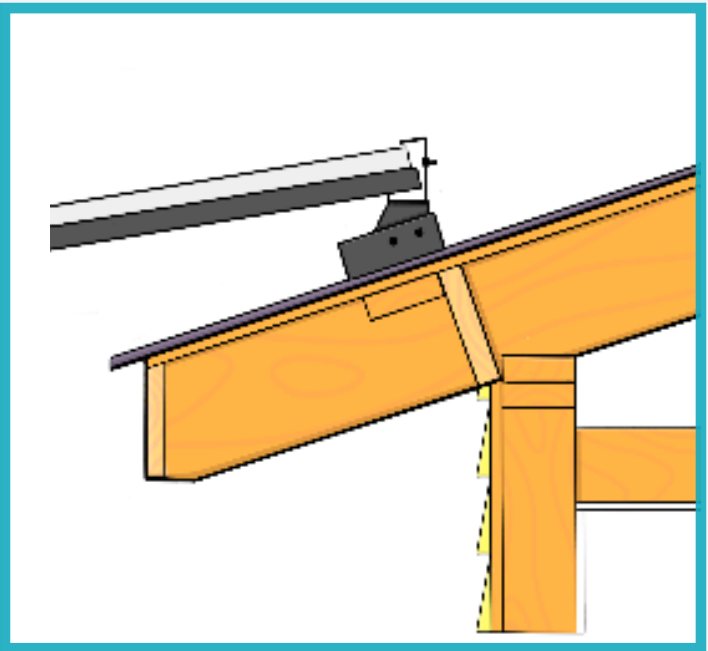
RELATED ITEMS



100400



100365



101728

ROOF RISER PACKAGE - BEAM

## ROOF RISER PACKAGE - BEAM

Category: MOUNT

Part No. 101728

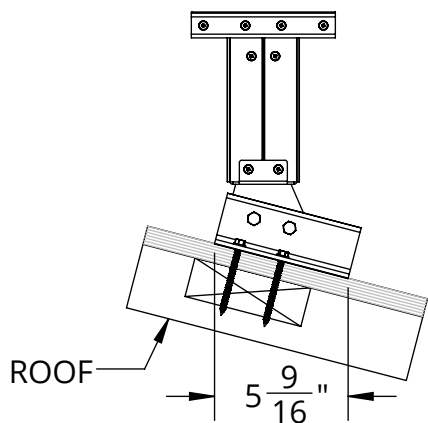
Specifications:

- Allows Heavy Duty Beam To Be Elevated Above Existing Roofs To Achieve Desired Height And/Or Necessary Cover Pitch.

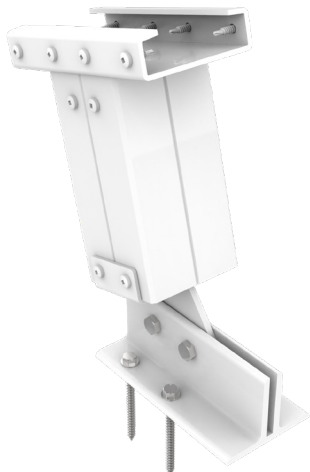
[CAD Download](#) | [PDF Download](#)

\$87.85/pkg.

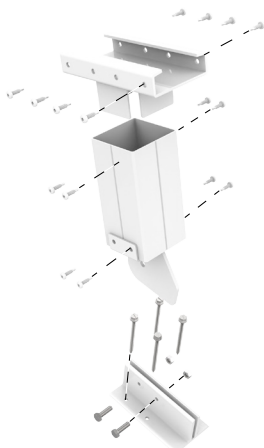
Front View



Iso View



Detail View



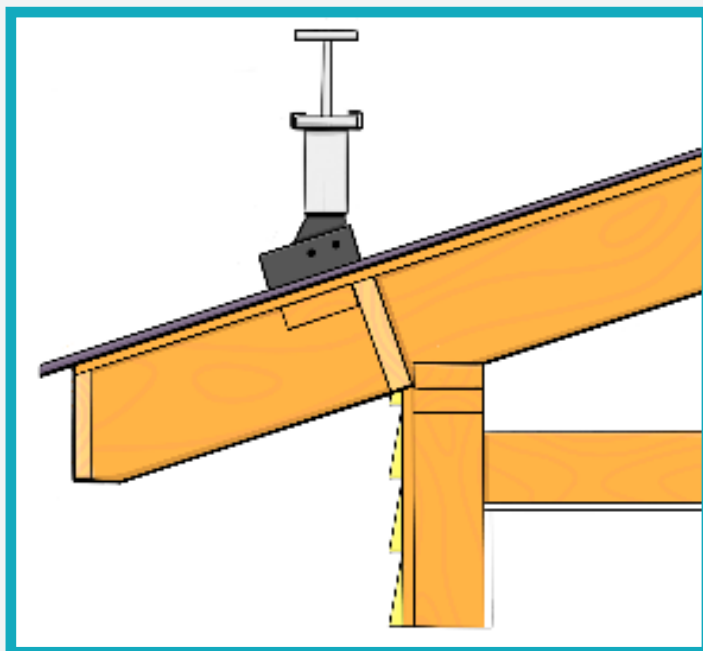
## INCLUDED PARTS

#	PART NO.	PART NAME	QTY
1	101732	Post Beam Connector	1
2	100425	Patio Cover Post	1
3	101710	Roof Mount Post Connector	1
4	100423	Wall Mount Bracket - 5.75"	1
5	100588	#14 Lag Screw	4
6	100587	Bolt, 5/16-18 x 1	2
7	100589	Nut, 5/16-18	2
8	100591	#10 Button Head Screw	16

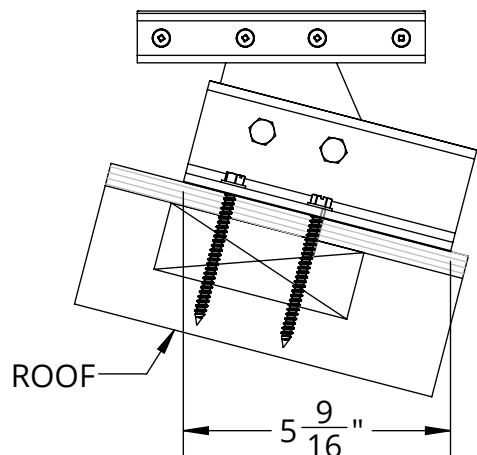
## RELATED ITEMS



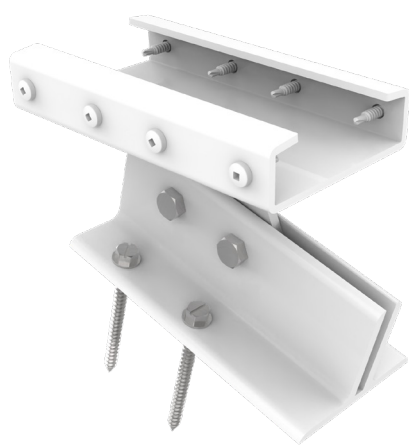
100365



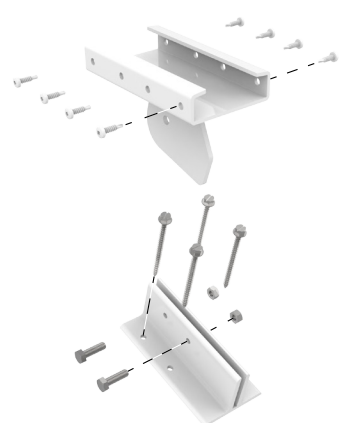
Front View



Iso View



Detail View



101729 ROOF MOUNT PACKAGE - BEAM (FORWARD)

ROOF MOUNT PACKAGE - BEAM (FORWARD)

Category: MOUNT

Part No. 101729

Specifications:

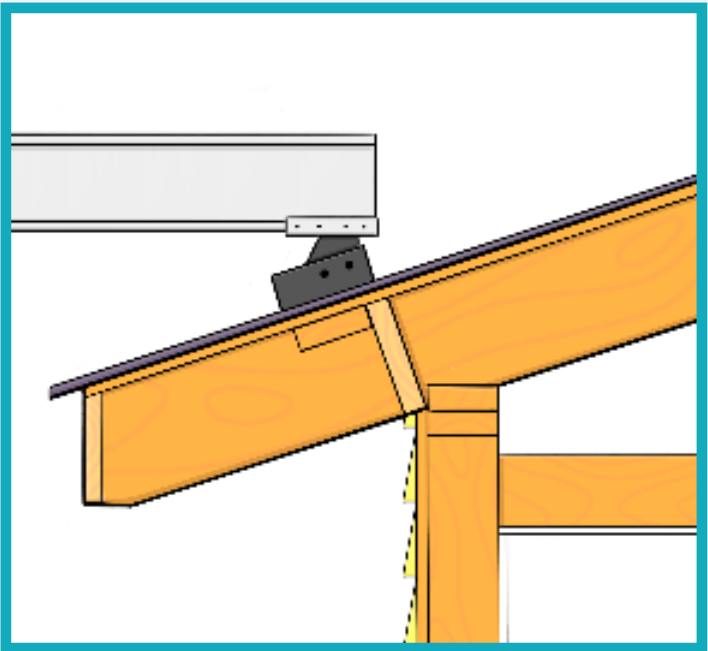
- Allows Heavy Duty Beam To Be Elevated Above Existing Roofs To Achieve Desired Height And/Or Necessary Cover Pitch.

[CAD Download](#) | [PDF Download](#)

\$48.18/pkg.

INCLUDED PARTS			
#	PART NO.	PART NAME	QTY
1	101731	Roof Mount - Beam (Forward)	1
2	100423	Wall Mount Bracket - 5.75"	1
3	100588	#14 Lag Screw	4
4	100587	Bolt, 5/16-18 x 1	2
5	100589	Nut, 5/16-18	8
6	100591	#10 Button Head Screw	2

RELATED ITEMS





101734

ROOF MOUNT PACKAGE - BEAM (ACROSS)

## ROOF MOUNT PACKAGE - BEAM (ACROSS)

Category: MOUNT

Part No. 101734

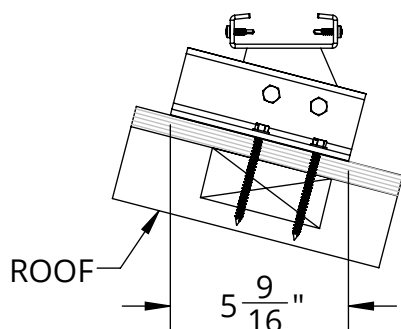
Specifications:

- Allows Heavy Duty Beam To Be Elevated Above Existing Roofs To Achieve Desired Height And/Or Necessary Cover Pitch.

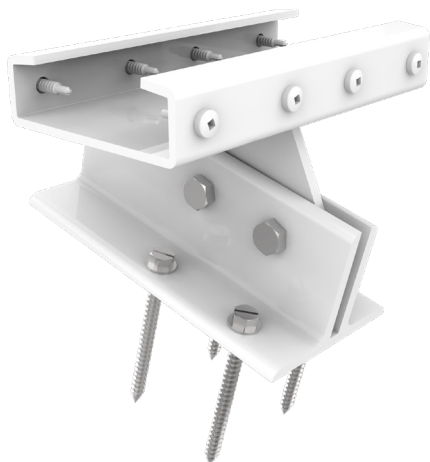
[CAD Download](#) | [PDF Download](#)

\$49.63/pkg.

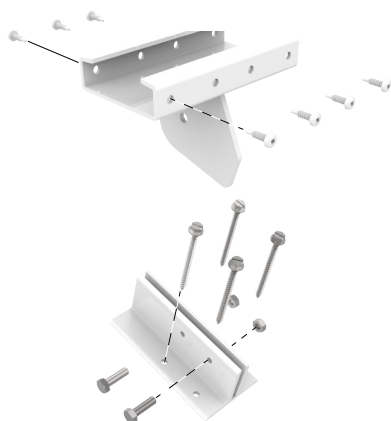
Front View



Iso View



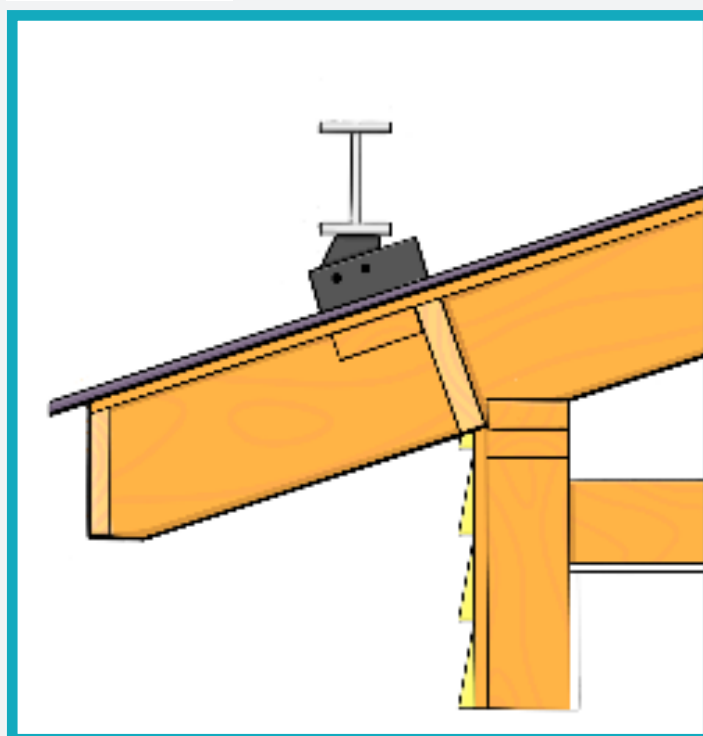
Detail View



## INCLUDED PARTS

#	PART NO.	PART NAME	QTY
1	101733	Roof Mount - Beam (Across)	1
2	100423	Wall Mount Bracket - 5.75"	1
3	100588	#14 Lag Screw	4
4	100587	Bolt, 5/16-18 x 1	2
5	100589	Nut, 5/16-18	8
6	100591	#10 Button Head Screw	2

## RELATED ITEMS

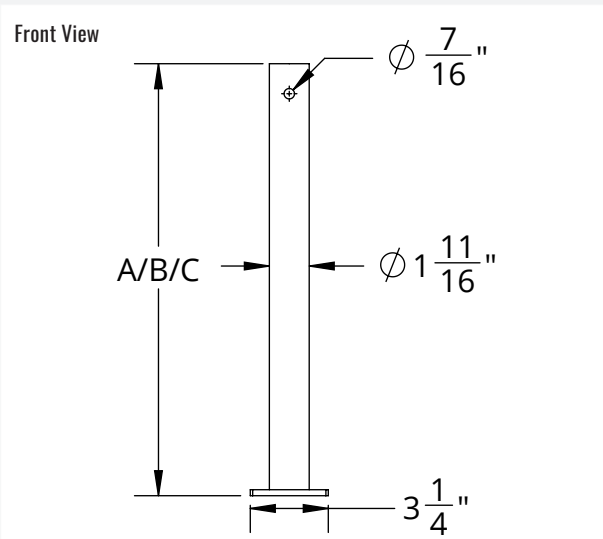


101798 SKYLIFT RISER TUBE ASSEMBLY

SKYLIFT RISER TUBE ASSEMBLY

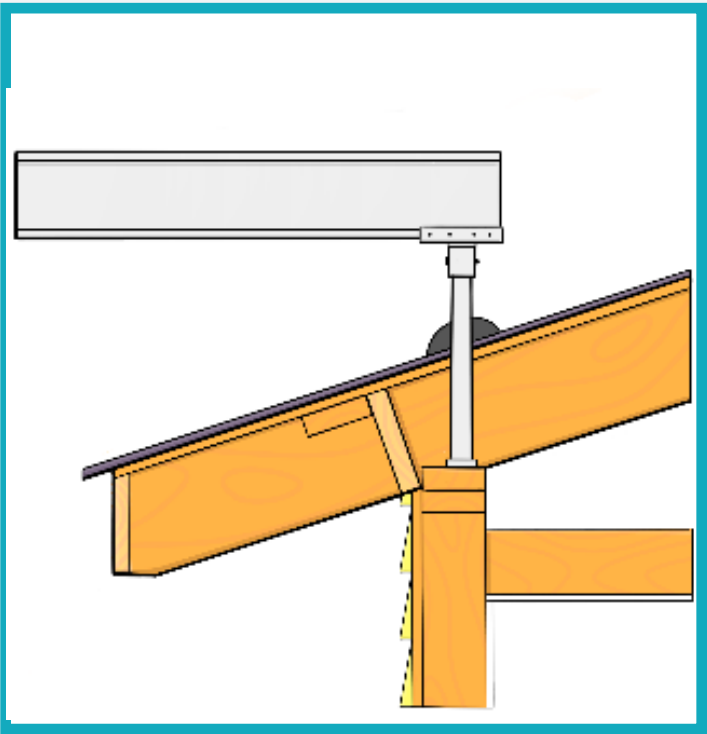
Category: MOUNT  
Part No. 101798, 101930 & 101931  
Specifications:

[CAD Download](#) | [PDF Download](#)  
**\$43.57-56.02/ea.**



INCLUDED PARTS					
#	PART NO.	PART NAME	QTY	UNIT	PRICE
1	101798	Skylift Assembly - 18"	1	EA	\$43.57
2	101931	Skylift Assembly - 24"	1	EA	\$47.72
3	101930	Skylift Assembly - 36"	1	EA	\$56.02

RELATED ITEMS



**101800****SKYLIFT SADDLE BEAM****SKYLIFT SADDLE BEAM**

Category: MOUNT

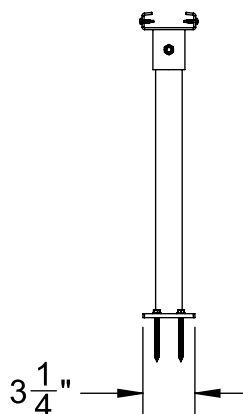
Part No. 101800

Specifications:

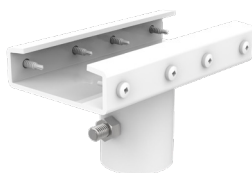
- Attach To Roof Riser To Mount Heavy Duty Beam. Rotate To Allow Beam To Run Along Roof Or To Project From Roof.

[CAD Download](#) | [PDF Download](#)**\$34.17/pkg.**

Front View



Iso View



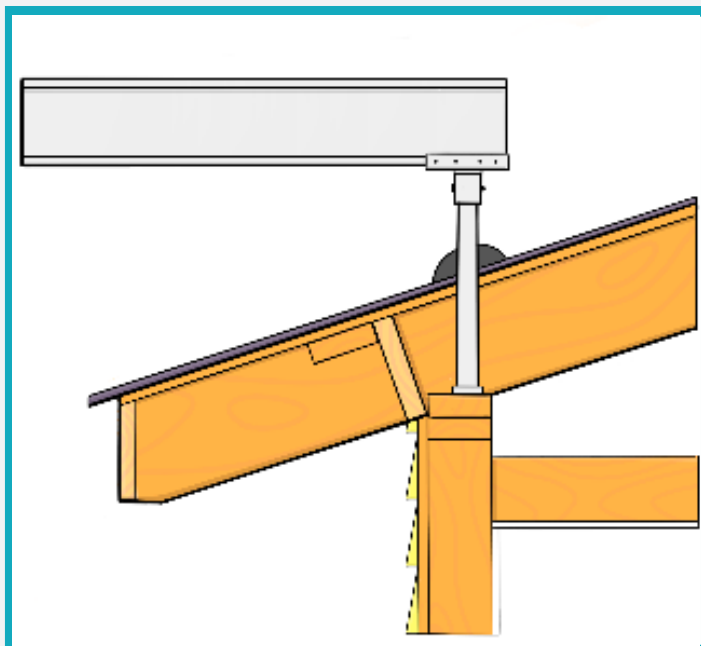
Detail View

**INCLUDED PARTS**

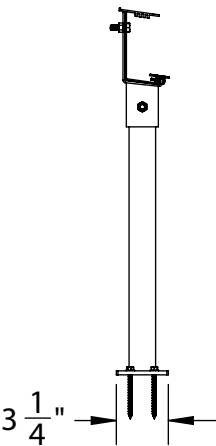
#	PART NO.	PART NAME	QTY
1	101803	Skylift Beam Bracket	1
2	101802	Nut, 3/8-16 SS HevHx	1
3	100587	Bolt, 5/16-18 x 1	1
4	100588	#14 Lag Screw	4
5	100591	#10 Button Head Screw	8

**RELATED ITEMS**

100365



Front View



Iso View



Detail View



**101804 SKYLIFT SADDLE HANGING RAIL**

**SKYLIFT SADDLE HANGING RAIL**

Category: MOUNT

Part No. 101804

Specifications:

- Attach To Roof Riser To Mount Standard Hanging Rail..

[CAD Download](#) | [PDF Download](#)

**\$33.61/ft.**

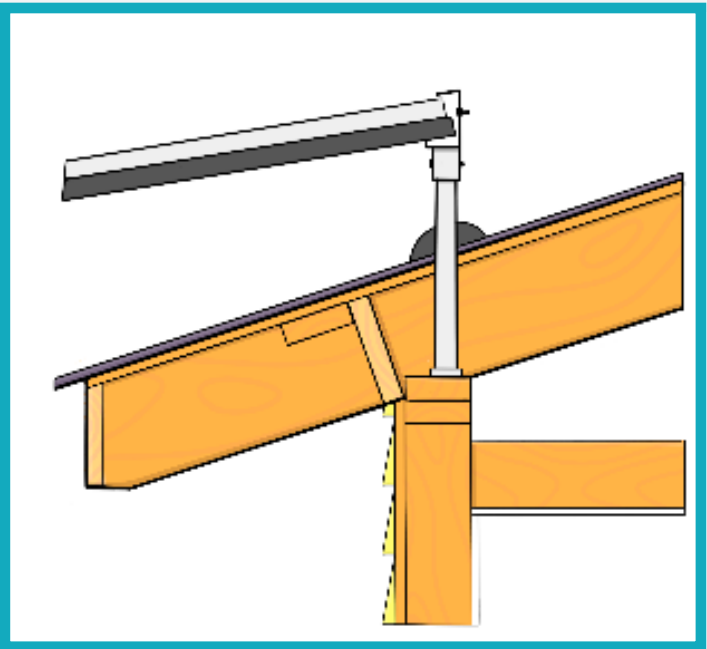
**INCLUDED PARTS**

#	PART NO.	PART NAME	QTY
1	101803	Skylift Hanger Bracket	1
2	101801	Bolt 3/8-16 SS HCS	1
3	101802	Nut, 3/8-16 SS HevHx	1
5	100588	#14 Lag Screw	4
6	100591	#10 Button Head Screw	4
7	100587	Bolt, 5/16-18 x 1	4
8	100589	Nut, 5/16-18	4

**RELATED ITEMS**



100400





100419

Wall Mount Bracket

## WALL MOUNT BRACKET

Category: MOUNT

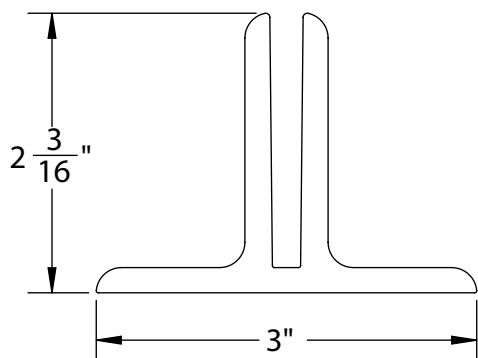
Part No. 100419, 100421&amp; 100423

Specifications:

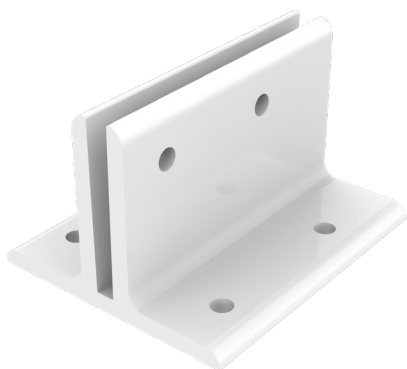
- Heavy Duty Bracket Used To Mount Beams To Structure Walls, Structure Roofs And To Connect Beams To Each Other.

[CAD Download](#) | [PDF Download](#)
**\$12.45-14.52/ft.**

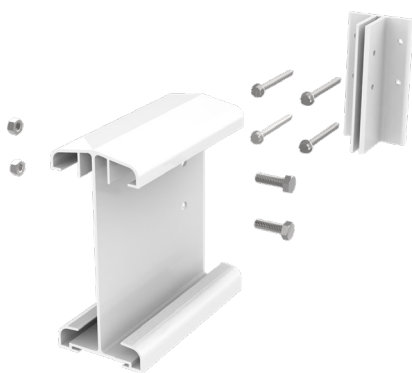
Front View



Iso View



Detail View



## INCLUDED PARTS

#	PART NO.	PART NAME	QTY	UNIT	PRICE
1	100419	Wall Mount Bracket - 3 <sup>1/2</sup> "	1	FT	\$12.45
2	100421	Wall Mount Bracket - 4 <sup>3/4</sup> "	1	FT	\$13.49
3	100423	Wall Mount Bracket - 5 <sup>3/4</sup> "	1	FT	\$14.52

## RELATED ITEMS



100340

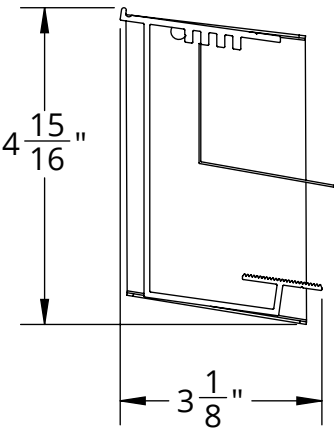


100365

## Application Typical Installation



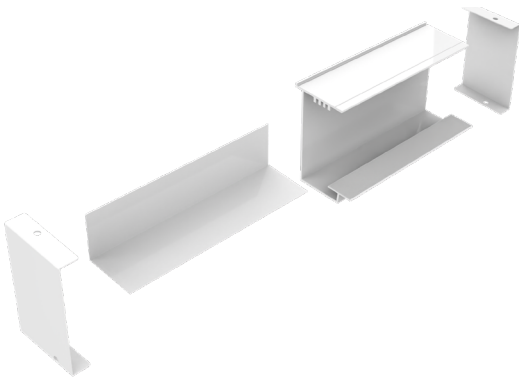
Front View



Iso View



Detail View



# 100400 HANGING RAIL WITH END CAPS

Category: HANGING RAIL

Part No. 100400

Specifications:

- Extruded Aluminum Channel Attached Along Structure Or Fascia Or Above Roofline As High Starting Point For Shed Style Covers.

[CAD Download](#) | [PDF Download](#)

**\$9.79/ft.**

INCLUDED PARTS			
#	PART NO.	PART NAME	QTY
1	100401	Hanging Rail	1
2	100541	Hanging Rail End Cap (Right)	1
3	100539	Hanging Rail End Cap (Left)	1
4	100575	Hanger Flashing - 1 7/8" x 2 1/8" x 102"	1
5	100591	#10 Button Head Screw	4

## RELATED ITEMS



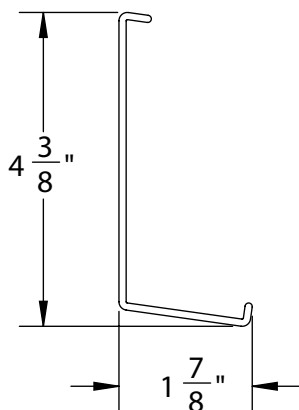
## Application Typical Installation



100411

HANGING RAIL SPLICE -16"

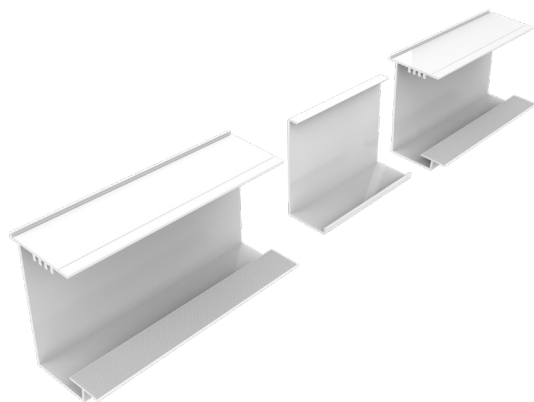
Front View



Iso View



Detail View



## HANGING RAIL SPLICE -16"

Category: SPLICE

Part No. 100411

Specifications:

- Insertable Aluminum Splice To Connect Two Sections Of Hanging Rail Where Over 24 Foot Lengths Are Required.

[CAD Download](#) | [PDF Download](#)
**\$9.41/ea.**

## INCLUDED PARTS

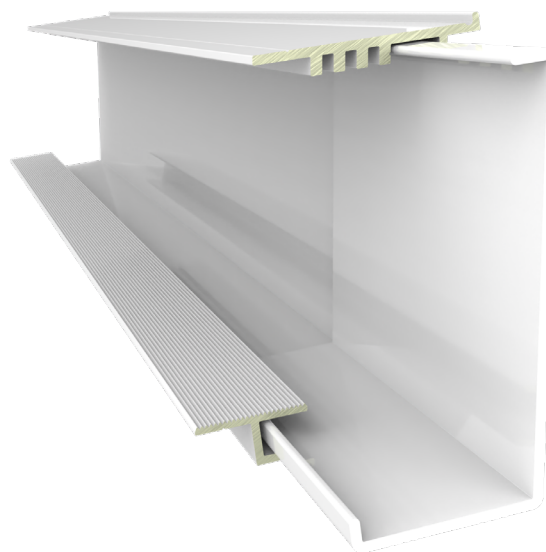
#	PART NO.	PART NAME	QTY
1	100411	Hanging Rail Splice	1

## RELATED ITEMS



100400

## Application Typical Installation





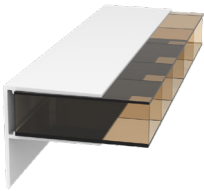
A photograph of a modern house with dark grey horizontal siding and white window frames. A large, black-framed glass-enclosed patio structure is attached to the house, extending over a wooden deck. The patio has a gabled roof and is supported by a central black pillar. Inside the patio, there is a dark-colored outdoor sofa with light-colored cushions. The house is surrounded by lush greenery, including tall evergreen trees in the background and various shrubs and plants in the foreground. The scene is captured in bright daylight, with strong shadows and highlights.

# RETROFIT

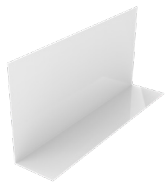
**LIVE BEYOND WALLS**  
We just want to relax outside



# RETROFIT



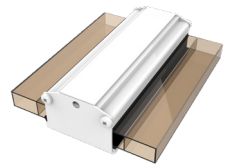
100442



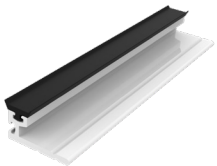
100579



103338



101741



100604



100415

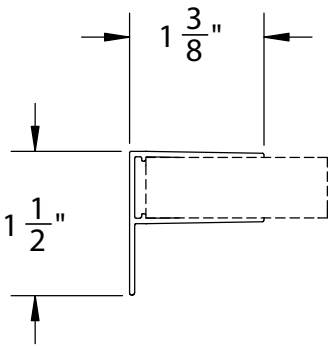


100464

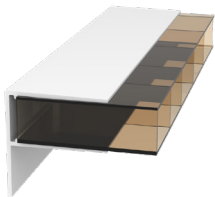


103363

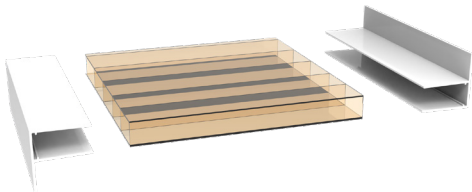
Front View



Iso View



Detail View



LARGE F-SECTION

Category: FLASHING

Part No. 100442

Specifications:

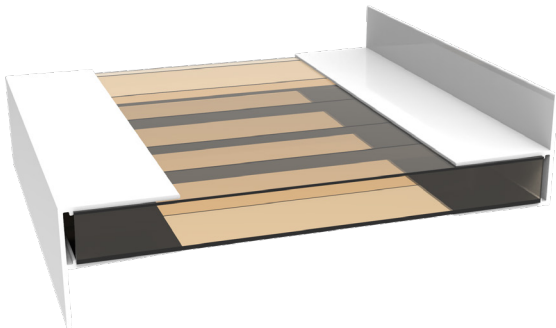
- Larger Aluminum F-Section Used To Hold Acrylic Panels In Place When Used To Glaze Small Vertical Areas Such As Gable Ends (Rakes).

[CAD Download](#) | [PDF Download](#)

**\$1.85/ft.**

INCLUDED PARTS			
#	PART NO.	PART NAME	QTY
1	100442	Large F-Section	1

Application Typical Installation



100579

Wall Flashing - 2 3/4" x 1 1/4" x 102"

**WALL FLASHING - 2 3/4" X 1 1/4" X 102"**

Category: ACCESSORY

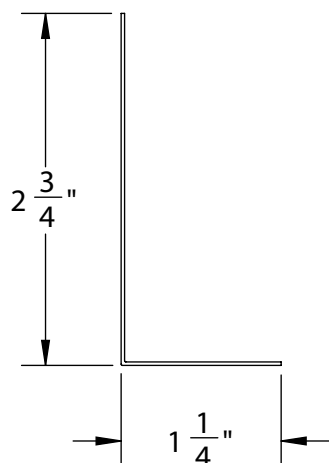
Part No.100579

Specifications:

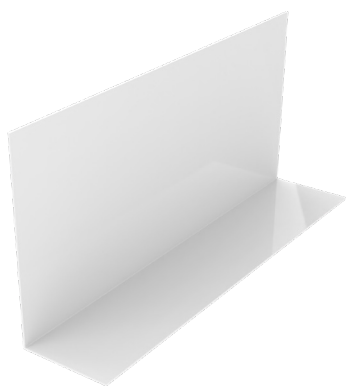
- Formed Aluminum Flashing Used When Side Of Covers Meet With Structure Walls.

[CAD Download](#) | [PDF Download](#)**\$12.45/ea.**

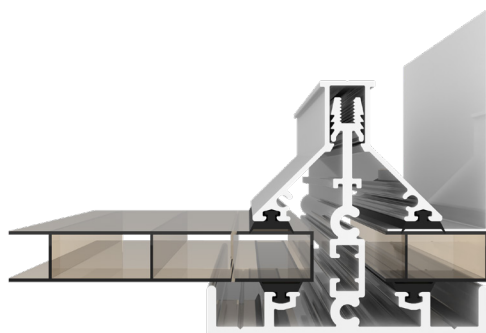
Front View



Iso View



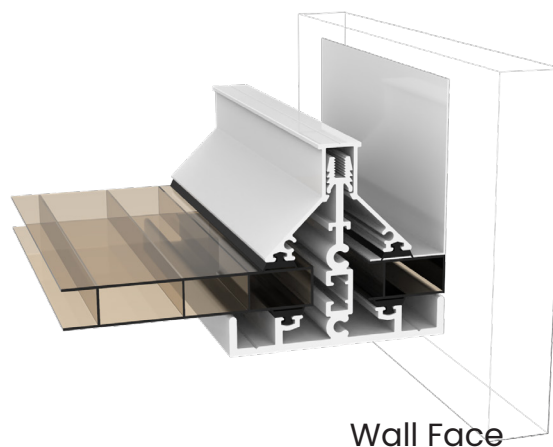
Detail View

**INCLUDED PARTS**

#	PART NO.	PART NAME	QTY
1	100579	Wall Flashing - 2 3/4" x 1 1/4" x 102"	1

**RELATED ITEMS**

100433

**Application Typical Installation**

103338

CLAMPING BAR UPPER ASSEMBLY

CLAMPING BAR UPPER ASSEMBLY

Category: ACCESSORY

Part No.103338

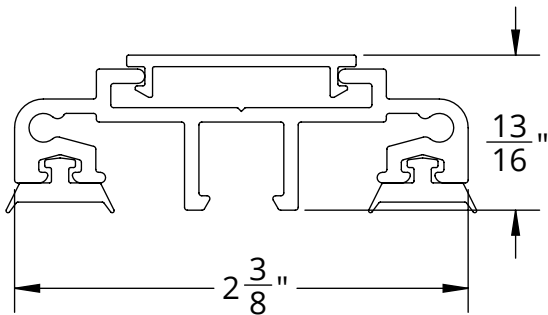
Specifications:

- Glazing System Used To Various Thicknesses Of Glazing Material To Existing Metal Rafters. Includes: Clamping Bar, PVC Screw Cover & Rubber Gasketing.

[CAD Download](#) | [PDF Download](#)

\$5.00/ea.

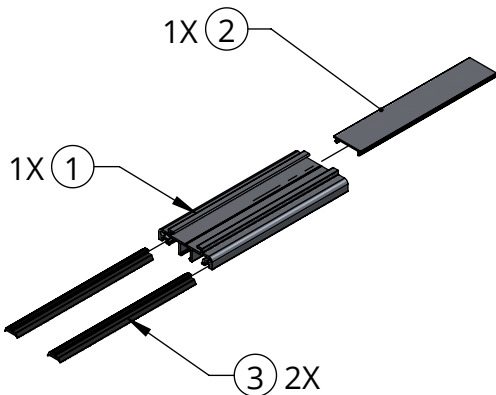
Front View



Iso View



Detail View



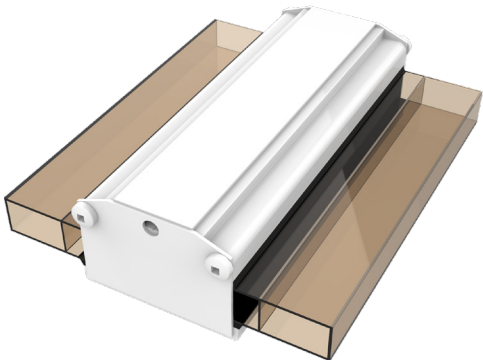
INCLUDED PARTS

#	PART NO.	PART NAME	QTY
1	100325	Clamping Bar	1
2	100583	PVC Screw Cover	1
3	100290	Rubber Gasket	2

RELATED ITEMS



Application Typical Installation





## 101741

## CLAMPING SYSTEM COMPLETE ASSEMBLY

## CLAMPING SYSTEM COMPLETE ASSEMBLY

Category: ACCESSORY

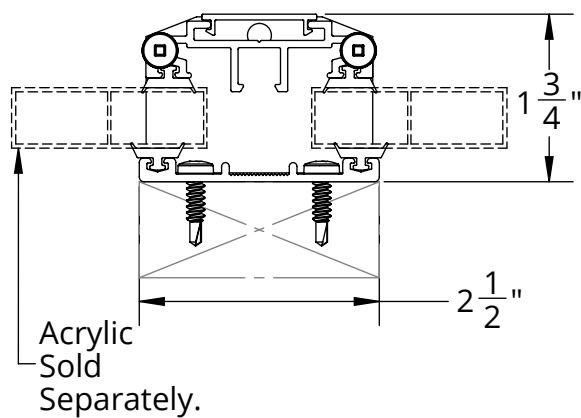
Part No. 101741

Specifications:

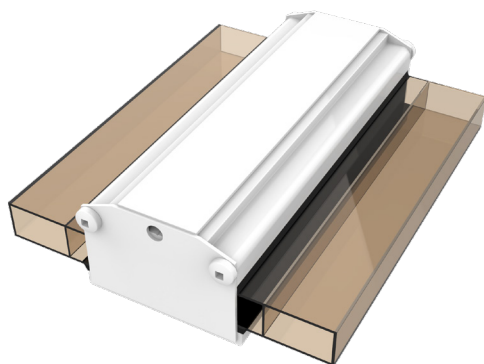
- Glazing System Used To Attach Various Thicknesses Of Glazing Material To Existing Roof Structure, Pergola Or Similar. Includes: Clamping Bar, PVC Screw Cover, Base Metal, Rubber Gasketing & End Cap.

[CAD Download](#) | [PDF Download](#)**\$8.51/ft.**

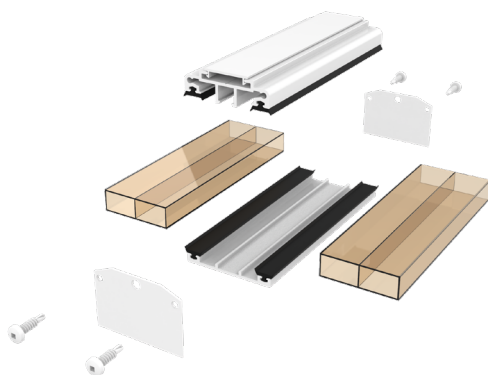
Front View



Iso View



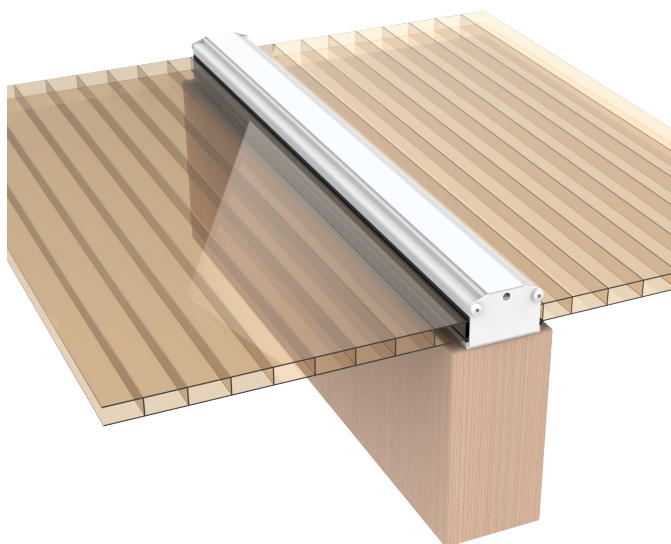
Detail View



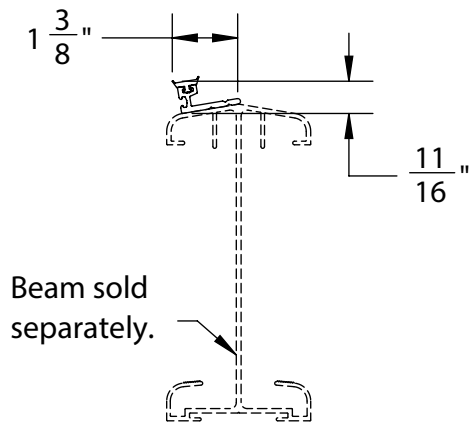
## INCLUDED PARTS

#	PART NO.	PART NAME	QTY
1	100325	Clamping Bar	1
2	100583	PVC Screw Cover	1
3	100327	Clamping Bar Base Metal	1
4	100290	Rubber Gasket	4
5	100535	Clamping Bar End Cap	2
6	100591	#10 Button Head Screw	4

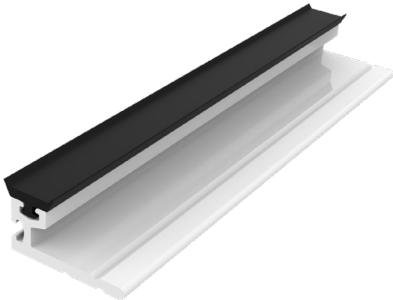
Application Typical Installation



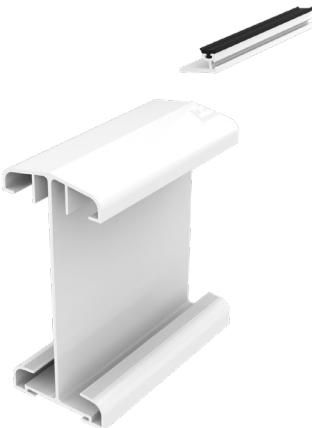
Front View



Iso View



Detail View



100604

WEATHER BLOCK WITH GASKET

WEATHER BLOCK WITH GASKET

Category: ACCESSORY

Part No.100604

Specifications:

- Gasketed Aluminum Section Used On Top Of Or On The Face Of Beams Between T-Bar Rafters. Seals The Opening Between The Glazing The Beam To Block Weather And/Or Insects.

[CAD Download](#) | [PDF Download](#)

**\$2.72/ft.**

INCLUDED PARTS

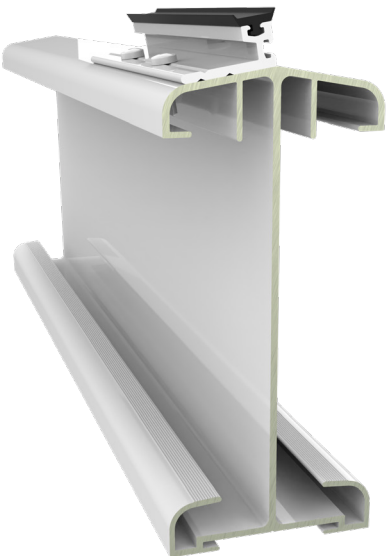
#	PART NO.	PART NAME	QTY
1	100431	Weather Block	1
2	100290	Rubber Gasket	1

RELATED ITEMS



100365

Application Typical Installation



**100415 1 x 1 CORNER****1 x 1 CORNER**

Category: ACCESSORY

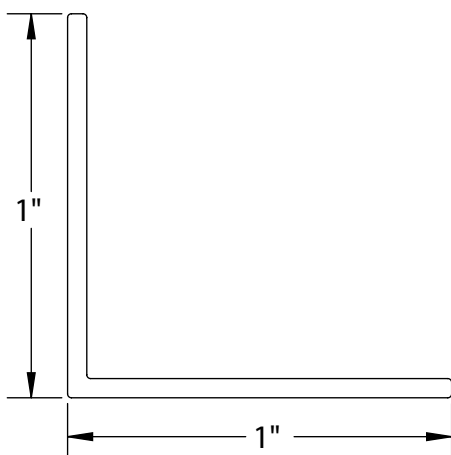
Part No. 100415

Specifications:

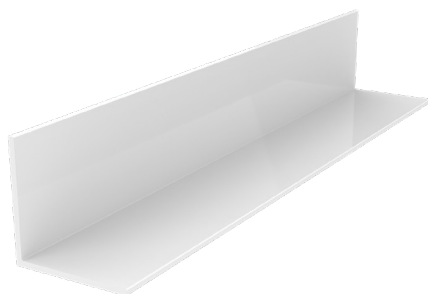
- Extruded Aluminum Corner Channel Used As Trim Where Necessary.

[CAD Download](#) | [PDF Download](#)
**\$1.82/ea.**

Front View



Iso View



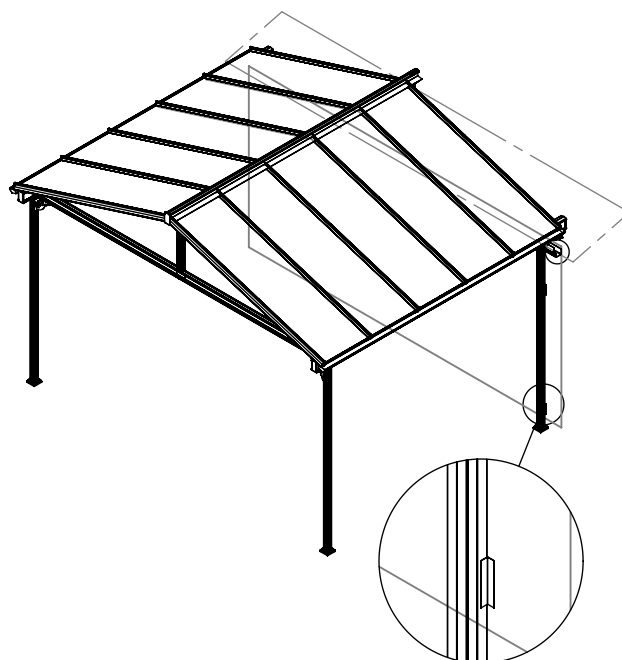
Detail View

**INCLUDED PARTS**

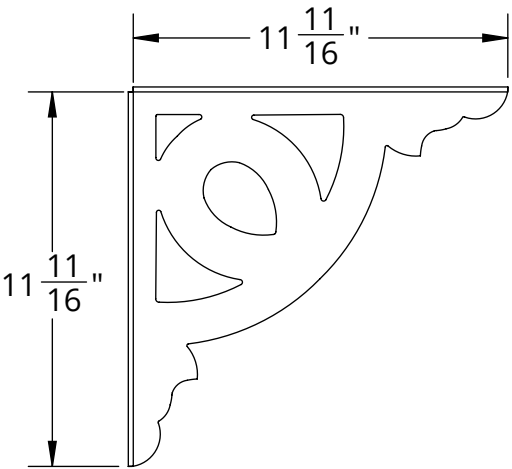
#	PART NO.	PART NAME	QTY
1	100415	1 x 1 Corner	1

**RELATED ITEMS**

100425

**Application Typical Installation**

Front View



Iso View



Detail View



100464

BEAM CORNER GUSSET

BEAM CORNER GUSSET

Category: ACCESSORY

Part No. 100464

Specifications:

- Used As A Decorative Element Or To Assist As A Brace Against Lateral Movement In Free-Standing Covers Or Otherwise.

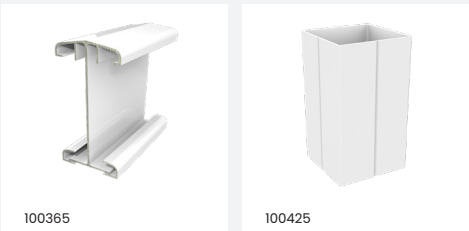
[CAD Download](#) | [PDF Download](#)

**\$30.29/ea.**

INCLUDED PARTS

#	PART NO.	PART NAME	QTY
1	100464	Beam Corner Gusset	1

RELATED ITEMS



Application Typical Installation





**103363****Glass Rail with Vinyl Insert****GLASS RAIL WITH VINYL INSERT**

Category: ACCESSORY

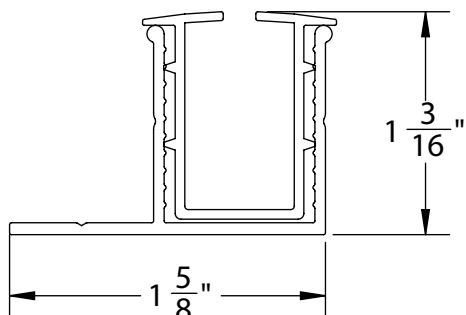
Part No. 103363

Specifications:

- Aluminum Section With Insert Attaches To Post & Beams For Vertical Glass Glazing In Wind Walls, Etc.

[CAD Download](#) | [PDF Download](#)**\$3.17/ft.**

Front View



Iso View



Detail View

**INCLUDED PARTS**

#	PART NO.	PART NAME	QTY
1	103363	Glass Rail	1
2	100292	Glass Vinyl Insert	1

**RELATED ITEMS**

100425

**Application Typical Installation**

100581      Gutter Flashing - 3 1/2" x 3/4" x 7/8" x 102"

GUTTER FLASHING - 3 1/2" X 3/4" X 7/8" X 102"

Category: ACCESSORY

Part No. 100581

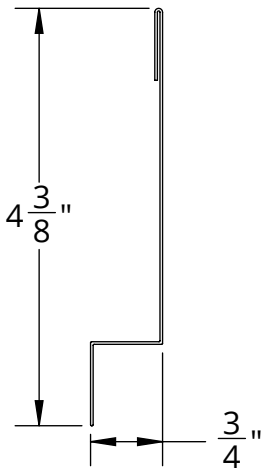
Specifications:

- Formed Aluminum Flashing Used When Mounting Covers Above Existing Conventional Gutters.

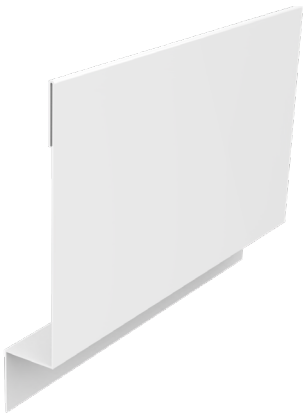
[CAD Download](#) | [PDF Download](#)

\$18.67/ea.

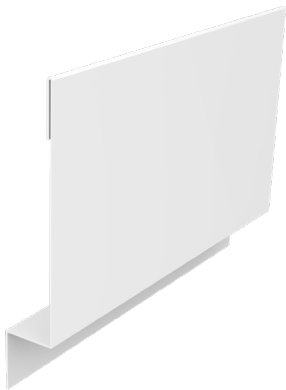
Front View



Iso View



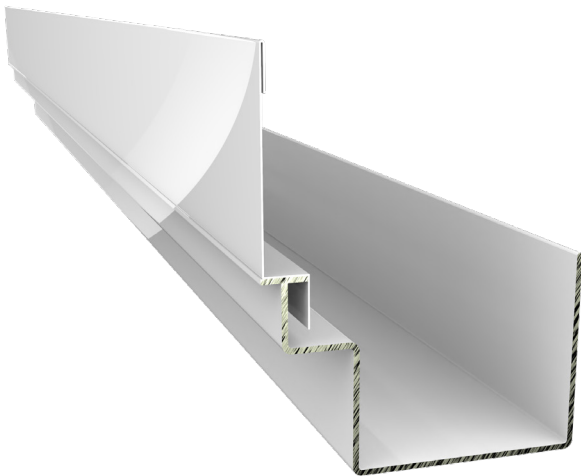
Detail View



INCLUDED PARTS

#	PART NO.	PART NAME	QTY
1	100581	Gutter Flashing - 3 1/2" x 3/4" x 7/8" x 102"	1

Application Typical Installation



**101743****ACRYLITE® Wave****ACRYLITE® WAVE**

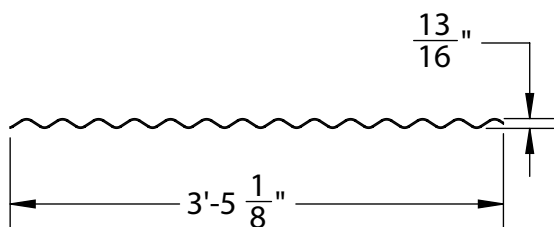
Category: ACCESSORY

Part No. VARIES

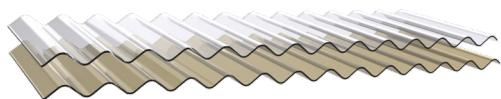
Specifications:

[CAD Download](#) | [PDF Download](#)**\$197.11/ft.**

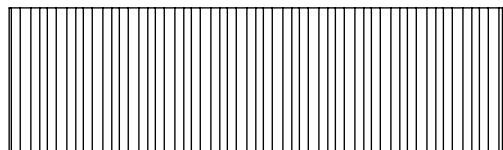
Front View



Iso View



Detail View

**INCLUDED PARTS**

#	PART NO.	PART NAME	QTY
1	101743	Smooth Clear - 12	1
2	101745	Smooth White - 12	1
3	101747	Smooth Sunglass Grey - 12	1
4	101749	Graphite Grey - 12	1
5	101755	Prismatic Clear - 12	1
6	101757	Prismatic Bronze - 12	1
7	101759	Heatstop Cool Blue - 12	1
8	101744	Smooth Clear - 16	1
9	101746	Smooth White - 16	1
10	101748	Smooth Sunglass Grey - 16	1
11	101750	Graphite Grey - 16	1
12	101756	Prismatic Clear - 16	1
13	101758	Prismatic Bronze - 16	1
14	101760	Heatstop Cool Blue - 16	1

101761 Wave Profile Calottes

WAVE PROFILE CALOTTES

Category: ACCESSORY

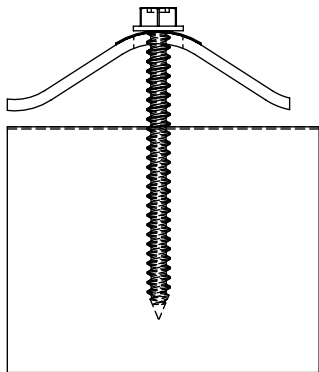
Part No.101761

Specifications:

[CAD Download](#) | [PDF Download](#)

\$1.76/ea.

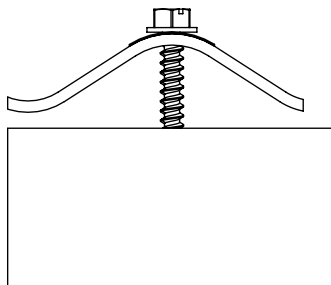
Front View



Iso View



Detail View



INCLUDED PARTS

#	PART NO.	PART NAME	QTY
1	101761	Wave Profile Calottes (Mill)	1
2	101762	Wave Profile Calottes (Brown)	1
3	101763	Wave Profile Foam Closure	1
4	101764	Wave Ridge Flashing (2 Piece)	1

Application Typical Installation







5916 195th St., NE  
Arlington, WA 98223  
[www.americanpatiocovers.com](http://www.americanpatiocovers.com)  
Email: [tom@americanpatiocovers.com](mailto:tom@americanpatiocovers.com)  
Phone: 360-530-2508

Copyright © 2019 American Patio Concepts